

Forced Air Oven

TFO-5-2

PART ID: CTF522-EA



Capacity	4.9 cu.ft. (138.0 liters)
Interior Dimensions W x D x H	21.0" x 19.4" x 20.7" 533 x 494 x 527 mm
Exterior Dimensions W x D x H	31.4" x 28.1" x 38.8" 798 x 714 x 986 mm
Unit Weight	208 lb (94.3 kg)
Shipping Weight	258 lb (117 kg)
Shelves	2 standard, 9 total
Maximum Weight Per Shelf	50 lb / 22.6 kg
Permitted Total Load	200 lb / 91 kg
Standard Door Gasket	Woven Fiberglass
Access Port	1.75" Rear
Controls	Watlow EZ-ZONE
Warranty	2 Year Limited Warranty
Interior Construction	300 series stainless steel
Exterior Construction	20 gauge steel, powder coated
Vertical Clearance	24.0" (600 mm)
Wall Clearance, Each Side	6.0" (152 mm)
Wall Clearance, Rear	12.0" (300 mm)



Electrical, 50/60Hz, AC, 1Ø

Voltage	220V-240V
Full Load Amps	10
Nominal Power (watts @150°C)	725
Recommended Breaker, Amps	15
NEMA Plug Supplied	6-15P

Energy Consumption (kWh/day)

At 80°C	6.7
At 150°C	12.7
At 306°C	22.7

Temperature Range 20°C above ambient to 306°C

Heat-Up Time — Minutes to 80°C	6
Heat-Up Time — Minutes to 150°C	28
Heat-Up Time — Minutes to 306°C	80
Recovery after Door Opening (30 sec.) — Minutes to 80°C	2
Recovery after Door Opening (30 sec.) — Minutes to 150°C	3
Recovery after Door Opening (30 sec.) — Minutes to 306°C	20
Recovery after Door Opening (60 sec.) — Minutes to 80°C	3
Recovery after Door Opening (60 sec.) — Minutes to 150°C	5.5
Recovery after Door Opening (60 sec.) — Minutes to 306°C	26

Temperature Uniformity

At 80°C	0.75°C
At 150°C	1.5°C
At 306°C	3.5°C

Air Flow Performance

Air Changes Per Hr at Max	180
Flow Rate (CFM)	15.2



MADE IN
USA



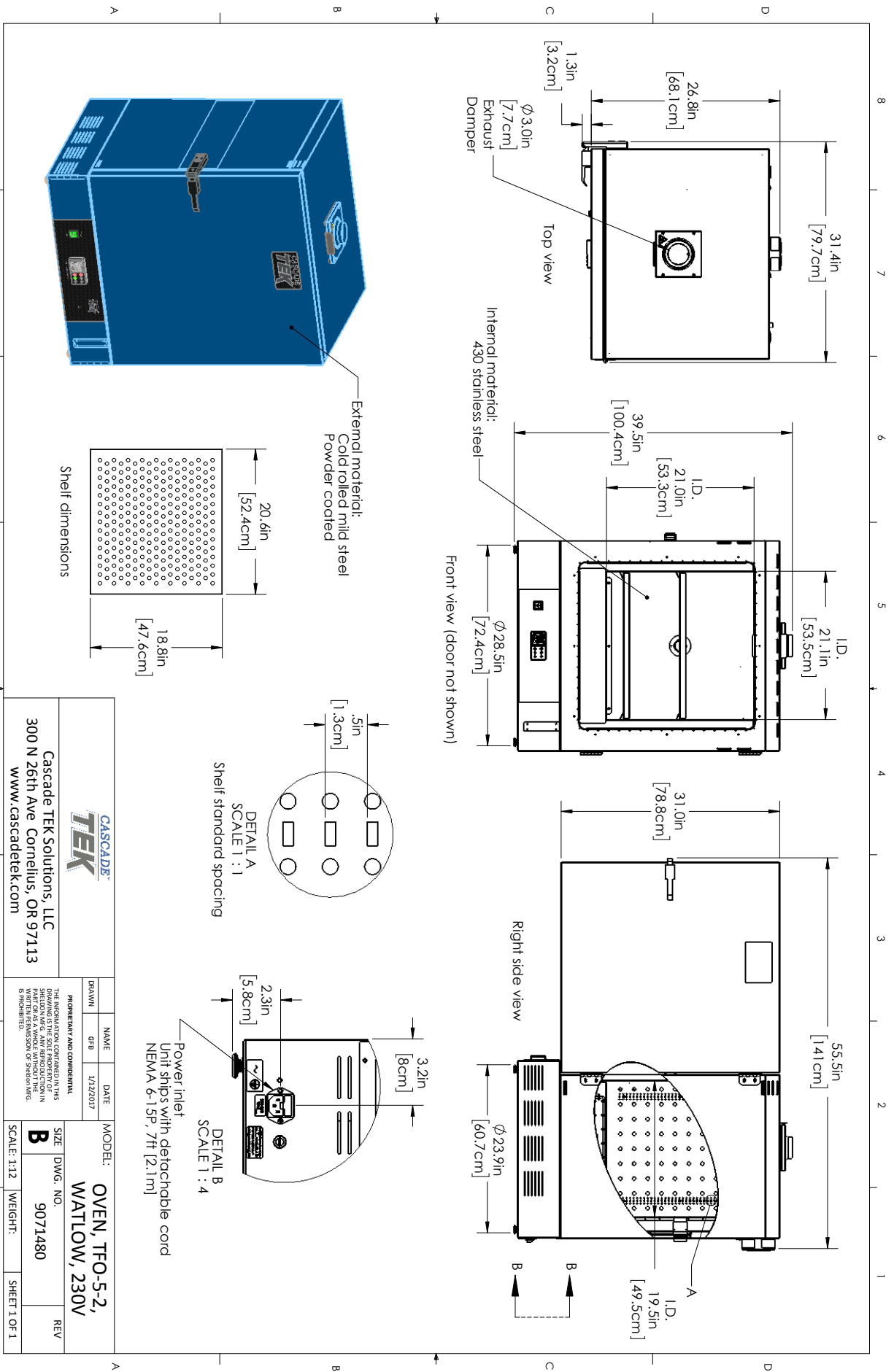
C US CE



0740578 3/21

Contact Cascade TEK

sales@cascadetek.com • cascadetek.com • +1-971-371-4096



		Cascade TEK Solutions, LLC 300 N 26th Ave Cornelius, OR 97113 www.cascadetek.com	
DRAWN	NAME	DATE	MODEL:
GFB		1/12/2017	OVEN, TFO-5-2, WATLOW, 230V
<small>PROPRIETARY AND CONFIDENTIAL THE INFORMATION CONTAINED IN THIS DRAWING IS THE PROPERTY OF CASCADTEK. NO PART OF THIS DRAWING MAY BE REPRODUCED OR TRANSMITTED IN ANY FORM OR BY ANY MEANS, ELECTRONIC OR MECHANICAL, WITHOUT THE WRITTEN PERMISSION OF CASCADTEK, INC.</small>		SIZE	DWG. NO.
		B	9071480
SCALE: 1:12	WEIGHT:	REV	
			SHEET 1 OF 1