

Forced Air Oven

TFO-5

PART ID: CTF522



| | |
|-------------------------------|---|
| Capacity | 4.9 cu.ft. (138.0 liters) |
| Interior Dimensions W x D x H | 21.0" x 19.4" x 20.7" 533 x 494 x 527 mm |
| Exterior Dimensions W x D x H | 31.4" x 28.1" x 38.8" 798 x 714 x 986 mm |
| Unit Weight | 208 lb (94.3 kg) |
| Shipping Weight | 258 lb (117 kg) |
| Shelves | 2 standard, 9 total |
| Maximum Weight Per Shelf | 50 lb / 22.6 kg |
| Permitted Total Load | 200 lb / 91 kg |
| Standard Door Gasket | Woven Fiberglass |
| Access Port | 1.75" Rear |
| Controls | Watlow EZ-ZONE |
| Warranty | 2 Year Limited Warranty |
| Interior Construction | 300 series stainless steel |
| Exterior Construction | 20 gauge steel, powder coated |
| Vertical Clearance | 24.0" (600 mm) |
| Wall Clearance, Each Side | 6.0" (152 mm) |
| Wall Clearance, Rear | 12.0" (300 mm) |

Electrical, 50/60Hz, AC, 1Ø

| | |
|------------------------------|-----------|
| Voltage | 110V-120V |
| Full Load Amps | 14 |
| Nominal Power (watts @150°C) | 700 |
| Recommended Breaker, Amps | 15 |
| NEMA Plug Supplied | 5-15P |

Energy Consumption (kWh/day)

| | |
|----------|------|
| At 80°C | 7.5 |
| At 150°C | 13.5 |
| At 306°C | 23.8 |

Temperature Range 20°C above ambient to 306°C

| | |
|--|-----|
| Heat-Up Time — Minutes to 80°C | 9 |
| Heat-Up Time — Minutes to 150°C | 28 |
| Heat-Up Time — Minutes to 306°C | 130 |
| Recovery after Door Opening (30 sec.) — Minutes to 80°C | 2 |
| Recovery after Door Opening (30 sec.) — Minutes to 150°C | 4 |
| Recovery after Door Opening (30 sec.) — Minutes to 306°C | 45 |
| Recovery after Door Opening (60 sec.) — Minutes to 80°C | 3.5 |
| Recovery after Door Opening (60 sec.) — Minutes to 150°C | 6 |
| Recovery after Door Opening (60 sec.) — Minutes to 306°C | 57 |

Temperature Uniformity

| | |
|----------|--------|
| At 80°C | 0.75°C |
| At 150°C | 1.8°C |
| At 306°C | 4.5°C |

Air Flow Performance

| | |
|---------------------------|------|
| Air Changes Per Hr at Max | 180 |
| Flow Rate (CFM) | 15.2 |

MADE IN
USA



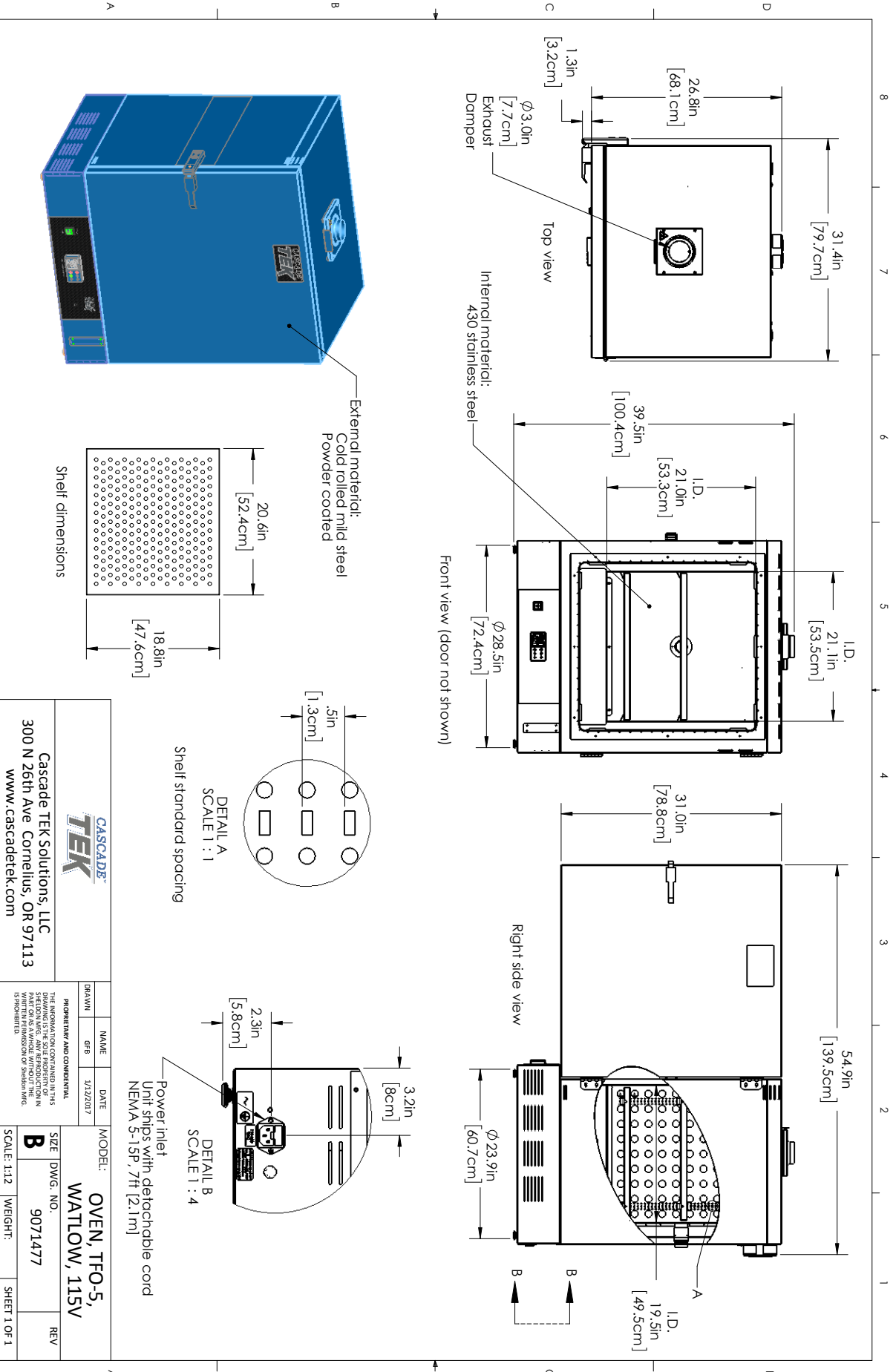
C US CE



0740577 3/21

Contact Cascade TEK

sales@cascadetek.com • cascadetek.com • +1-971-371-4096



| | | | |
|---|-----------|--|------------------------------|
| CASCADE TEK | | Cascade TEK Solutions, LLC 300 N 26th Ave Cornelius, OR 97113 www.cascadetek.com | |
| DATE | 1/12/2017 | MODEL: | OVEN, TFO-5, WATLOW, 115V |
| NAME | | SIZE | DWG. NO. 9071477 |
| DRAWN | | SCALE | 1:12 |
| GEB | | WEIGHT: | |
| THE INFORMATION CONTAINED IN THIS DRAWING IS THE SOLE PROPERTY OF CASCADE TEK SOLUTIONS, LLC. NO PART OF THIS DRAWING IS TO BE REPRODUCED OR TRANSMITTED IN ANY FORM OR BY ANY MEANS, WITHOUT THE WRITTEN PERMISSION OF CASCADE TEK SOLUTIONS, LLC. | | | |
| SHEET 1 OF 1 | | | |