

Forced Air Oven

TFO-3-2

PART ID: CTF322-EA

CASCADE™

TEK

Capacity	3 cu.ft. (85.0 liters)
Interior Dimensions W x D x H	16.5" x 19.5" x 16.2" 419 x 495 x 412 mm
Exterior Dimensions W x D x H	26.9" x 28.6" x 34.0" 684 x 727 x 840 mm
Unit Weight	170.5 lb (77.3 kg)
Shipping Weight	215.6 lb (97.8 kg)
Shelves	2 standard, 7 total
Maximum Weight Per Shelf	50 lb / 22.6 kg
Permitted Total Load	200 lb / 91 kg
Standard Door Gasket	Woven Fiberglass
Access Port	1.75" Rear
Controls	Watlow EZ-ZONE
Warranty	2 Year Limited Warranty
Interior Construction	300 series stainless steel
Exterior Construction	20 gauge steel, powder coated
Vertical Clearance	24.0" (600 mm)
Wall Clearance, Each Side	6.0" (152 mm)
Wall Clearance, Rear	12.0" (300 mm)

Electrical, 50/60Hz, AC, 1Ø

Voltage	220V-240V
Full Load Amps	10
Nominal Power (watts @150°C)	675
Recommended Breaker, Amps	15
NEMA Plug Supplied	6-15P

Energy Consumption (kWh/day)

At 80°C	6.5
At 150°C	12.2
At 306°C	22.1

Temperature Range 20°C above ambient to 306°C

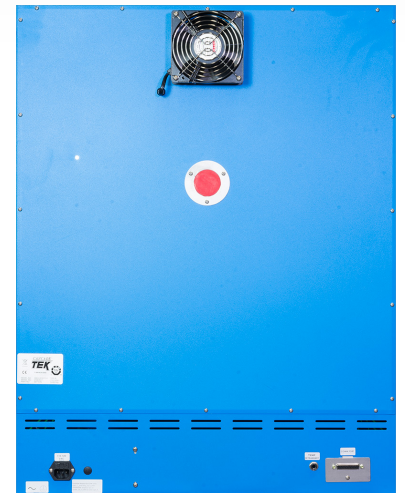
Heat-Up Time — Minutes to 80°C	6
Heat-Up Time — Minutes to 150°C	15
Heat-Up Time — Minutes to 306°C	57
Recovery after Door Opening (30 sec.) — Minutes to 80°C	1
Recovery after Door Opening (30 sec.) — Minutes to 150°C	1.5
Recovery after Door Opening (30 sec.) — Minutes to 306°C	5.5
Recovery after Door Opening (60 sec.) — Minutes to 80°C	2
Recovery after Door Opening (60 sec.) — Minutes to 150°C	3.5
Recovery after Door Opening (60 sec.) — Minutes to 306°C	11

Temperature Uniformity

At 80°C	0.75°C
At 150°C	2.5°C
At 306°C	5°C

Air Flow Performance

Air Changes Per Hr at Max	225
Flow Rate (CFM)	11.3



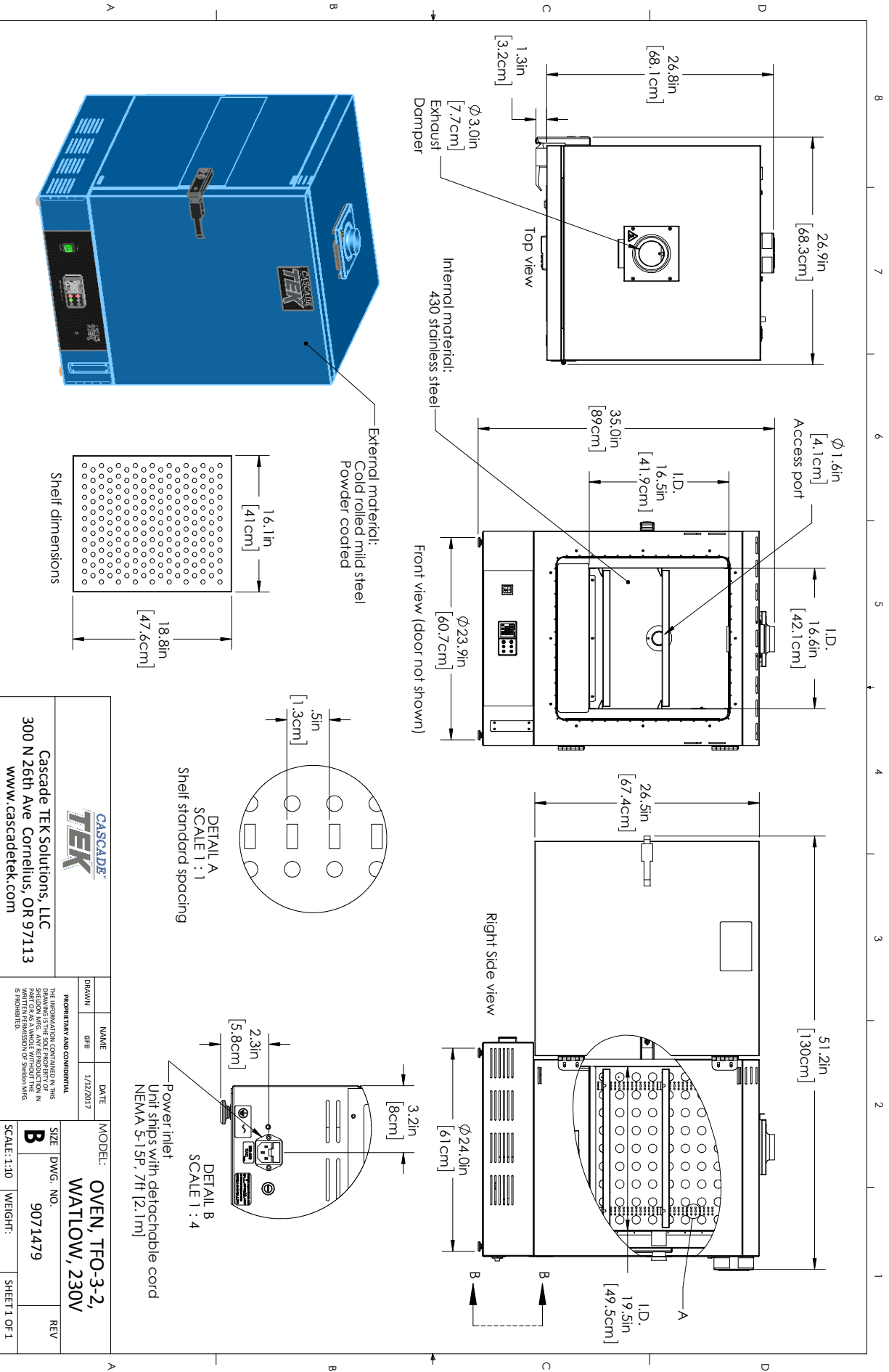
MADE IN
USA



C US CE



0740576 03/21



		Cascade TEK Solutions, LLC 300 N 26th Ave Cornelius, OR 97113 www.cascadetek.com	
DRAWN dfr	NAME dfr	DATE 1/12/2017	MODEL: OVEN, TFO-3-2, WATLOW, 230V
<small>THE INFORMATION CONTAINED IN THIS DRAWING IS THE SOLE PROPERTY OF CASCADE TEK SOLUTIONS, LLC. IT IS TO BE USED ONLY FOR THE PARTS OR AS SHOWN WITHOUT THE WRITTEN PERMISSION OF CASCADE TEK SOLUTIONS, LLC.</small>			SIZE DWG. NO. B 9071479
SCALE: 1:10		WEIGHT:	REV SHEET 1 OF 1