

Forced Air Oven

TFO-1-2
PART ID: CTF122-EA



Capacity	1.4 cu.ft. (39.4 liters)
Interior Dimensions W x D x H	12.1" x 13.7" x 14.5" 307 x 349 x 368 mm
Exterior Dimensions W x D x H	22.7" x 23.5" x 31.5" 577 x 596 x 800 mm
Unit Weight	126.5 lb (57.4 kg)
Shipping Weight	166.5 lb (76.5 kg)
Shelves	2 standard, 6 total
Maximum Weight Per Shelf	50 lb / 22.6 kg
Permitted Total Load	100 lb / 45.3 kg
Standard Door Gasket	Woven Fiberglass
Access Port	1.75" Rear
Controls	Watlow EZ-ZONE
Warranty	2 Year Limited Warranty
Interior Construction	300 series stainless steel
Exterior Construction	20 gauge steel, powder coated
Vertical Clearance	24.0" (600 mm)
Wall Clearance, Each Side	6.0" (152 mm)
Wall Clearance, Rear	12.0" (300 mm)

Electrical, 50/60Hz, AC, 1Ø

Voltage	220V-240V
Full Load Amps	8
Nominal Power (watts @150°C)	650
Recommended Breaker, Amps	15
NEMA Plug Supplied	6-15P

Energy Consumption (kWh/day)

At 80°C	5.7
At 150°C	11.8
At 306°C	18.8

Temperature Range 20°C above ambient to 306°C

Heat-Up Time — Minutes to 80°C	8
Heat-Up Time — Minutes to 150°C	20
Heat-Up Time — Minutes to 306°C	52
Recovery after Door Opening (30 sec.) — Minutes to 80°C	2.5
Recovery after Door Opening (30 sec.) — Minutes to 150°C	3.5
Recovery after Door Opening (30 sec.) — Minutes to 306°C	7
Recovery after Door Opening (60 sec.) — Minutes to 80°C	3
Recovery after Door Opening (60 sec.) — Minutes to 150°C	4.5
Recovery after Door Opening (60 sec.) — Minutes to 306°C	9

Temperature Uniformity

At 80°C	0.75°C
At 150°C	1.8°C
At 306°C	4°C

Air Flow Performance

Air Changes Per Hr at Max	330
Flow Rate (CFM)	5.6



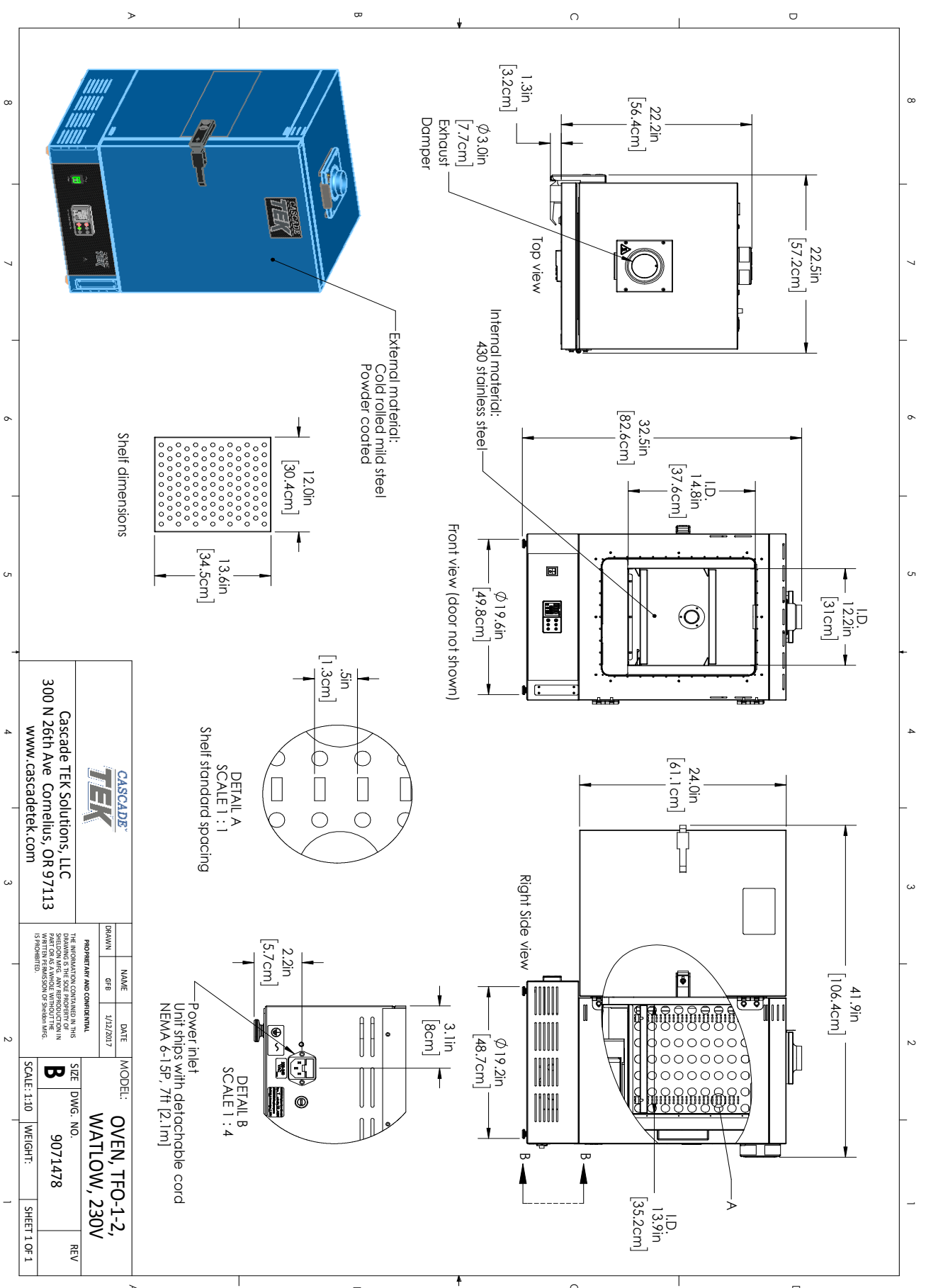
MADE IN
USA



C US CE



0740574 03/21



		PROJECTARY AND CONFIDENTIAL THE INFORMATION CONTAINED IN THIS DRAWING IS THE PROPERTY OF CASCADE TEK SOLUTIONS, LLC. IT IS TO BE USED ONLY FOR THE PROJECT AND LOCATION SPECIFICALLY IDENTIFIED HEREIN. ANY REPRODUCTION OR TRANSMISSION OF THIS INFORMATION WITHOUT THE WRITTEN PERMISSION OF CASCADE TEK SOLUTIONS, LLC IS PROHIBITED.	MODEL:	OVEN, TFO-1-2, WATLOW, 230V
			DATE:	1/22/2017
DRAWN:	GFB	NAME:	GFB	REV:
Cascade TEK Solutions, LLC 300 N 26th Ave. Cornelius, OR 97113 www.cascadetek.com		SIZE:	DWG. NO. 9071478	SCALE:
		WEIGHT:		SHEET 1 OF 1