

Forced Air Oven

TFO-1
PART ID: CTF122



Capacity	1.4 cu.ft. (39.4 liters)
Interior Dimensions W x D x H	12.1" x 13.7" x 14.5" 307 x 349 x 368 mm
Exterior Dimensions W x D x H	22.7" x 23.5" x 31.5" 577 x 596 x 800 mm
Unit Weight	126.5 lb (57.4 kg)
Shipping Weight	166.5 lb (76.5 kg)
Shelves	2 standard, 6 total
Maximum Weight Per Shelf	50 lb / 22.6 kg
Permitted Total Load	100 lb / 45.3 kg
Standard Door Gasket	Woven Fiberglass
Access Port	1.75" Rear
Controls	Watlow EZ-ZONE
Warranty	2 Year Limited Warranty
Interior Construction	300 series stainless steel
Exterior Construction	20 gauge steel, powder coated
Vertical Clearance	24.0" (600 mm)
Wall Clearance, Each Side	6.0" (152 mm)
Wall Clearance, Rear	12.0" (300 mm)

Electrical, 50/60Hz, AC, 1Ø

Voltage	110V-120V
Full Load Amps	12
Nominal Power (watts @150°C)	650
Recommended Breaker, Amps	15
NEMA Plug Supplied	5-15P

Energy Consumption (kWh/day)

At 80°C	6.5
At 150°C	12.4
At 306°C	19.8

Temperature Range 20°C above ambient to 306°C

Heat-Up Time — Minutes to 80°C	8
Heat-Up Time — Minutes to 150°C	20
Heat-Up Time — Minutes to 306°C	52
Recovery after Door Opening (30 sec.) — Minutes to 80°C	1.5
Recovery after Door Opening (30 sec.) — Minutes to 150°C	4.5
Recovery after Door Opening (30 sec.) — Minutes to 306°C	14
Recovery after Door Opening (60 sec.) — Minutes to 80°C	4
Recovery after Door Opening (60 sec.) — Minutes to 150°C	6
Recovery after Door Opening (60 sec.) — Minutes to 306°C	20

Temperature Uniformity

At 80°C	1°C
At 150°C	2.3°C
At 306°C	4.7°C

Air Flow Performance

Air Changes Per Hr at Max	330
Flow Rate (CFM)	5.6



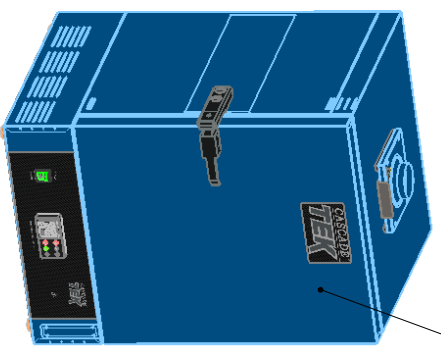
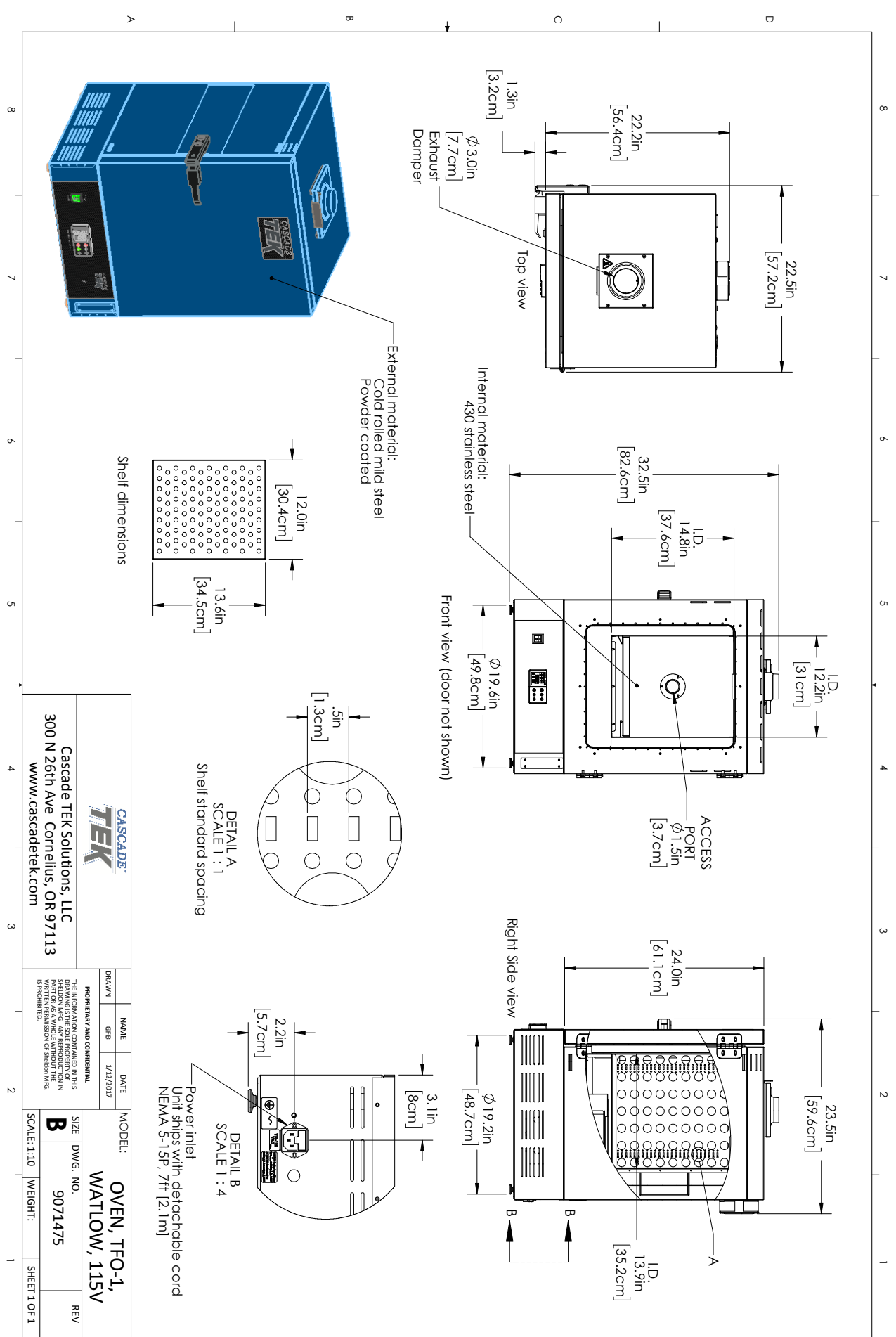
MADE IN
USA



C US CE



0740573 3/21



		MODEL: OVEN, TFO-1, WATLOW, 115V	
Cascade TEK Solutions, LLC 300 N 26th Ave Cornelius, OR 97113 www.cascadetek.com		DATE: 1/12/2017	SIZE: B
PROPRIETARY AND CONFIDENTIAL THE INFORMATION CONTAINED IN THIS SHEET IS UNCLASSIFIED EXCEPT WHERE SHOWN OTHERWISE. ANY REPRODUCTION IN WHOLE OR IN PART WITHOUT THE WRITTEN PERMISSION OF THE ORIGINAL AUTHOR IS PROHIBITED.	NAME: GFB	DATE: 1/12/2017	DWG. NO.: 9071475
SCALE: 1:10	WEIGHT:	SHEET: 1 OF 1	REV