

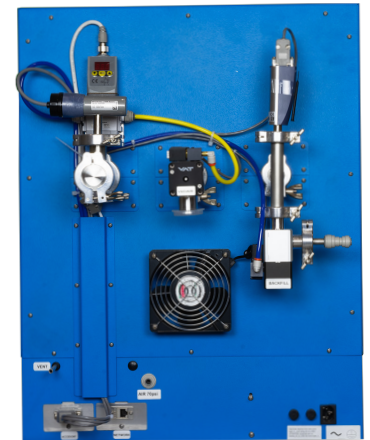
Vacuum Oven

TVO-2-2-VC

PART ID: CTVV222-EA



Capacity	1.67 cu.ft. (47.2 liters)
Interior Dimensions (W x D x H)	12" x 20" x 12" 304 x 508 x 304 mm
Exterior Dimensions (W x D x H)	20.2" x 34.9" x 27.1" 513 x 887 x 689 mm
Unit Weight	183 lb (83 kg)
Shipping Weight	224 lb (102 kg)
Shelves	3 standard, 3 total
Maximum Weight Per Shelf	35 lb / 15.8 kg
Permitted Total Load	105 lb / 47.6 kg
Standard Door Gasket	Silicone Standard
Access Port	1" vacuum port (KF-25)
Controls	Watlow F4T
Warranty	2 Year Limited Warranty
Interior Construction	300 series stainless steel
Exterior Construction	Painted Cold Roll Steel
Wall Clearance, Each Side	6.0" (152 mm)
Wall Clearance, Rear	12.0" (305 mm)
Vertical Clearance	12.0" (305 mm)
Electrical, 50/60Hz, AC, 1Ø	
Voltage	220V-240V
Full Load Amps	5.5
Nominal Power (watts @150°C)	750
Plug Supplied	EU 1-16P
Energy Consumption (kWh/day)	
At 80°C	13.9
At 150°C	16.7
At 220°C	26.5
Temperature Range 10°C above ambient to 220°C	
Heat-Up Time — Minutes to 80°C	70
Heat-Up Time — Minutes to 150°C	120
Heat-Up Time — Minutes to 220°C	175
Temperature Uniformity	+/- 6% of Set Point
Temperature Stability	+/- 0.2°C @ 150°C
Vacuum Display Range	1100 to 0.1 mTorr
Safety Certifications	UL 61010-1, EN 61010-1, CSA 61010-1, CE



MADE IN
USA



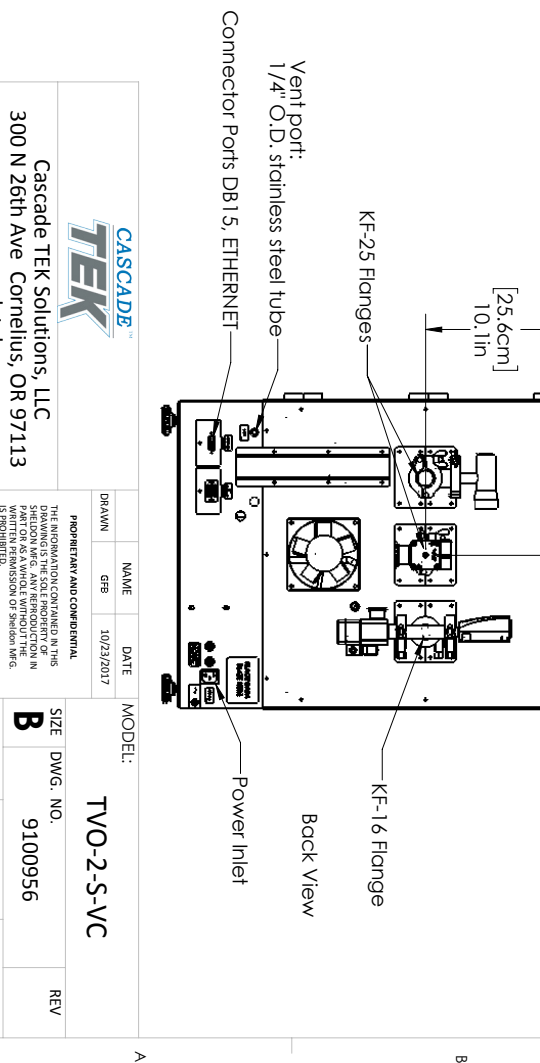
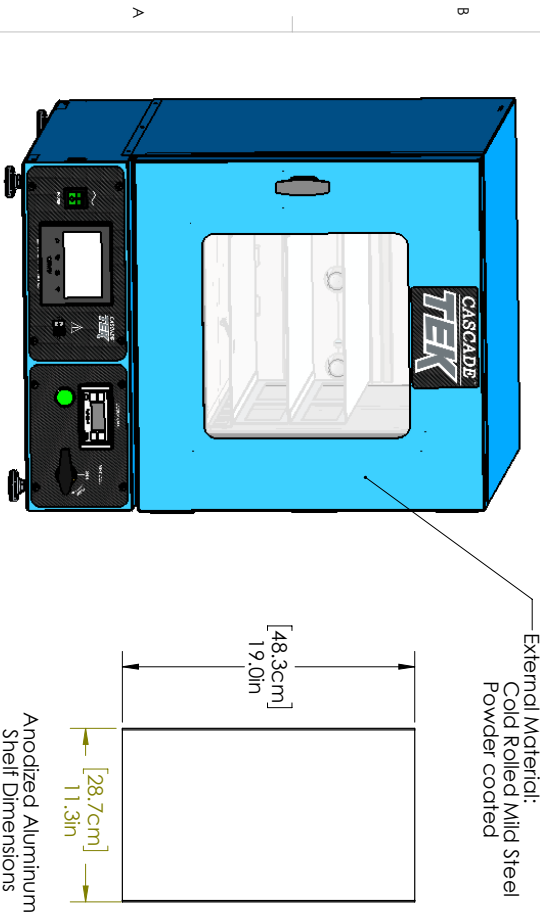
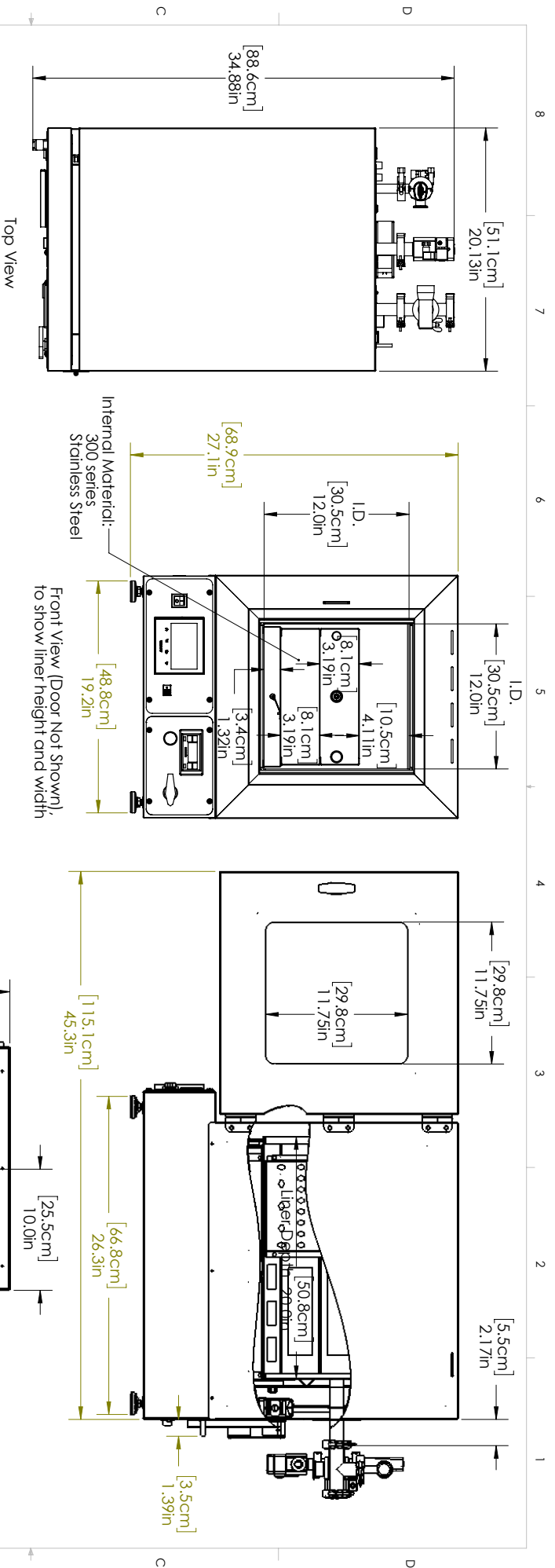
CE C US

We reserve the right to alter specifications at any time



0740595 2/20

Contact Cascade TEK
sales@cascadetek.com • www.cascadetek.com • +1-971-371-4096



		Cascade TEK Solutions, LLC 300 N 26th Ave Cornelius, OR 97113 www.cascadetek.com	
DRAWN	NAME	DATE	MODEL:
GFB		10/23/2017	TWO-2-S-VC
<small>PROPRIETARY AND CONFIDENTIAL THE INFORMATION CONTAINED IN THIS DRAWING IS THE SOLE PROPERTY OF CASCADE TEK SOLUTIONS, LLC AND IS TO BE USED ONLY IN CONNECTION WITH THE PART OR AS A WHOLE WITHOUT THE WRITTEN PERMISSION OF CASCADE TEK SOLUTIONS, LLC.</small>			
SIZE	DWG. NO.	REV	
B	9100956		
SCALE: 1:8	WEIGHT:	SHEET 1 OF 1	