

# Vacuum Oven

**TVO-5-2**  
PART ID: CTV522-EA



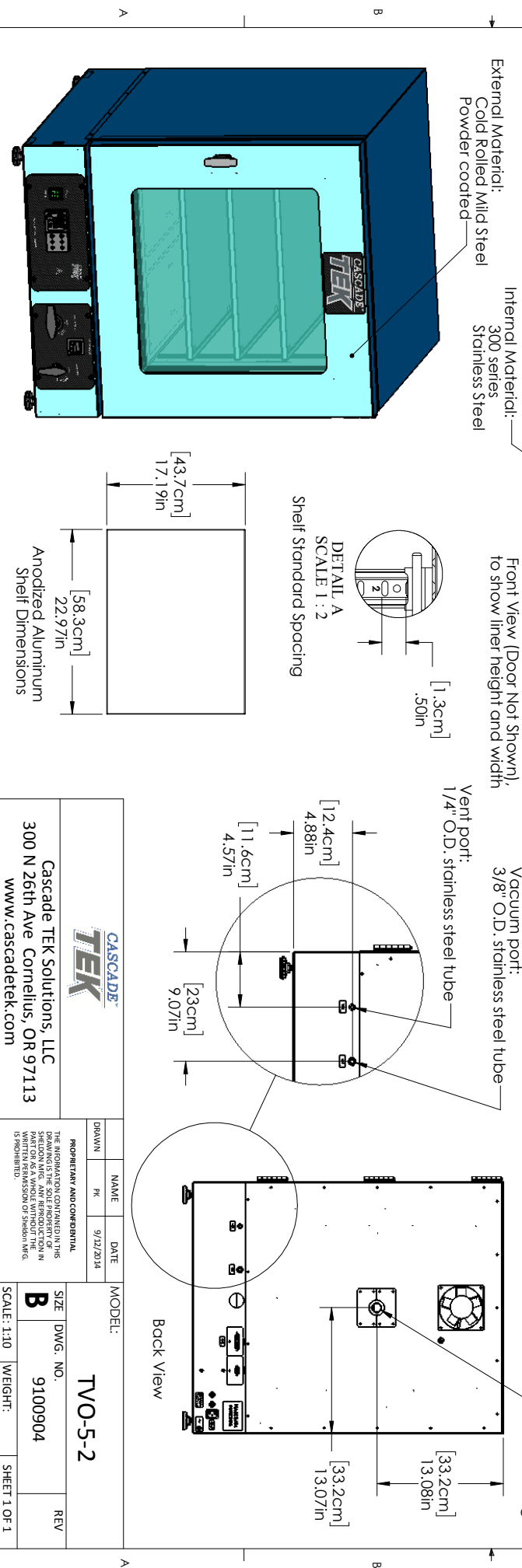
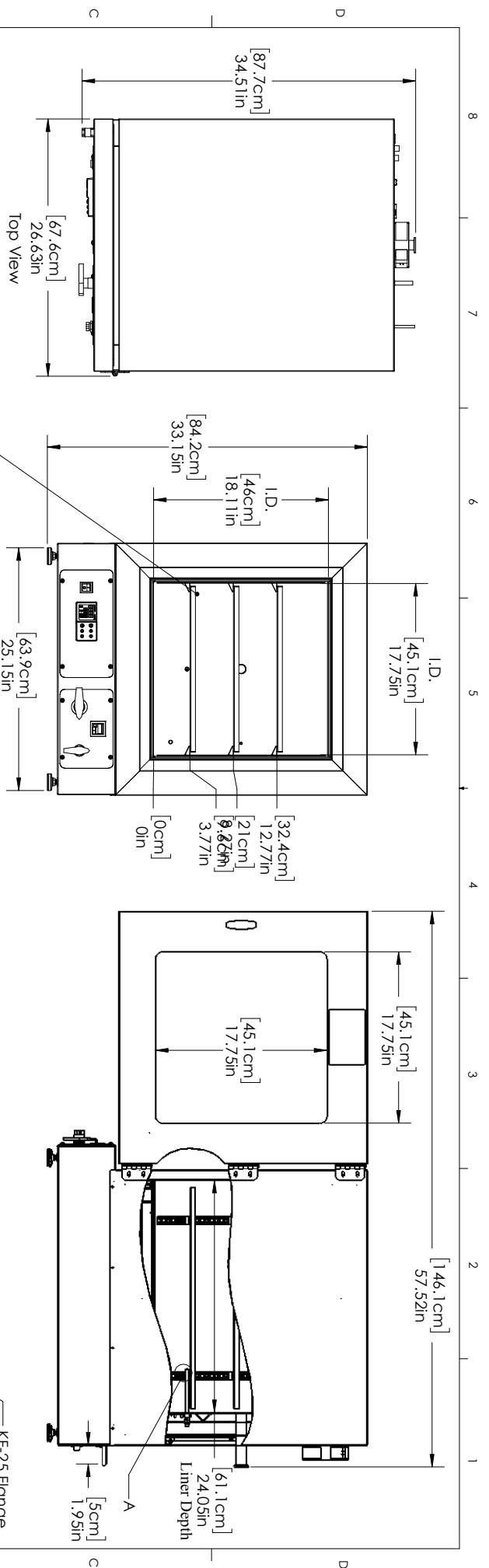
Capacity	4.5 cu.ft. (127.4 liters)
Interior Dimensions (W x D x H)	18.1" x 24.1" x 18.1" 459 x 612 x 459 mm
Exterior Dimensions (W x D x H)	26.7" x 34.5" x 33.2" 679 x 877 x 844 mm
Unit Weight	360 lb (163.3 kg)
Shipping Weight	452 lb (205 kg)
Shelves	3 standard, 6 total
Maximum Weight Per Shelf	35 lb / 15.8 kg
Permitted Total Load	105 lb / 47.6 kg
Standard Door Gasket	Silicone Standard
Access Port	1" vacuum port (KF-25)
Controls	Watlow EZ-ZONE
Warranty	2 Year Limited Warranty
Interior Construction	300 series stainless steel
Exterior Construction	Painted Cold Roll Steel
Wall Clearance, Each Side	6.0" (152 mm)
Wall Clearance, Rear	12.0" (305 mm)
Wall Clearance, Top	12.0" (305 mm)
<b>Electrical, 50/60Hz, AC, 1Ø</b>	
Voltage	220V-240V
Full Load Amps	7.0
Nominal Power (watts @150°C)	936
Plug Supplied	EU 1-16P; NEMA 6-15P
<b>Energy Consumption (kWh/day)</b>	
At 80°C	18.1
At 150°C	21.8
At 220°C	34.5
<b>Temperature Range 10°C above ambient to 220°C</b>	
Heat-Up Time — Minutes to 80°C	70
Heat-Up Time — Minutes to 150°C	120
Heat-Up Time — Minutes to 220°C	175
Temperature Uniformity	+/- 6% of Set Point
Temperature Stability	+/- 0.25°C @ 150°C
Operational Vacuum Range	-3.0 to -29.9 InHg
Vacuum Display Range	0-29.9 InHg
Safety Certifications	UL 61010-1, EN 61010-1, CSA 61010-1, CE



*We reserve the right to alter specifications at any time*

0740585 2/20

**Contact Cascade TEK**  
sales@cascadetek.com • cascadetek.com • +1-971-371-4096



		<b>Cascade TEK Solutions, LLC</b> 300 N 26th Ave Cornelius, OR 97113 www.cascadetek.com	
PROPRIETARY AND CONFIDENTIAL THE INFORMATION CONTAINED IN THIS DRAWING IS THE SOLE PROPERTY OF AN EMPLOYEE OR CONTRACTOR OF CASCADE TEK SOLUTIONS, LLC. NO PART OF THIS DRAWING IS TO BE REPRODUCED OR TRANSMITTED IN ANY FORM OR BY ANY MEANS, WITHOUT THE WRITTEN PERMISSION OF Cascade TEK Solutions, LLC.	DRAWN: [ ] NAME: [ ] RI: [ ]	DATE: 9/12/2014	MODEL: <b>TVO-5-2</b>
SIZE: <b>B</b>	DWG. NO.: 9100904	SCALE: 1:10	REV: [ ] WEIGHT: [ ] SHEET 1 OF 1