

Vacuum Oven

TVO-2-2

PART ID: CTV222-EA

CASCADE™

TEK

Capacity	1.67 cu.ft. (47.2 liters)
Interior Dimensions (W x D x H)	12" x 20" x 12" 304 x 508 x 304 mm
Exterior Dimensions (W x D x H)	20.2" x 30.8" x 27.1" 513 x 783 x 689 mm
Unit Weight	179 lb (81.2 kg)
Shipping Weight	218 lb (99 kg)
Shelves	3 standard, 3 total
Maximum Weight Per Shelf	35 lb / 15.8 kg
Permitted Total Load	105 lb / 47.6 kg
Standard Door Gasket	Silicone Standard
Access Port	1" vacuum port (KF-25)
Controls	Watlow EZ-ZONE
Warranty	2 Year Limited Warranty
Interior Construction	300 series stainless steel
Exterior Construction	Painted Cold Roll Steel
Wall Clearance, Each Side	6.0" (152 mm)
Wall Clearance, Rear	12.0" (305 mm)
Vertical Clearance	12.0" (305 mm)
Electrical, 50/60Hz, AC, 1Ø	
Voltage	220V-240V
Full Load Amps	5.5
Nominal Power (watts @150°C)	750
Plug Supplied	EU 1-16P
Energy Consumption (kWh/day)	
At 80°C	13.9
At 150°C	16.7
At 220°C	26.5
Temperature Range 10°C above ambient to 220°C	
Heat-Up Time — Minutes to 80°C	70
Heat-Up Time — Minutes to 150°C	120
Heat-Up Time — Minutes to 220°C	175
Temperature Uniformity	+/- 6% of Set Point
Temperature Stability	+/- 0.2°C @ 150°C
Operational Vacuum Range	-3.0 to -29.9 InHg
Vacuum Display Range	0-29.9 InHgF
Safety Certifications	UL 61010-1, EN 61010-1, CSA 61010-1, CE

We reserve the right to alter specifications at any time



MADE IN
USA



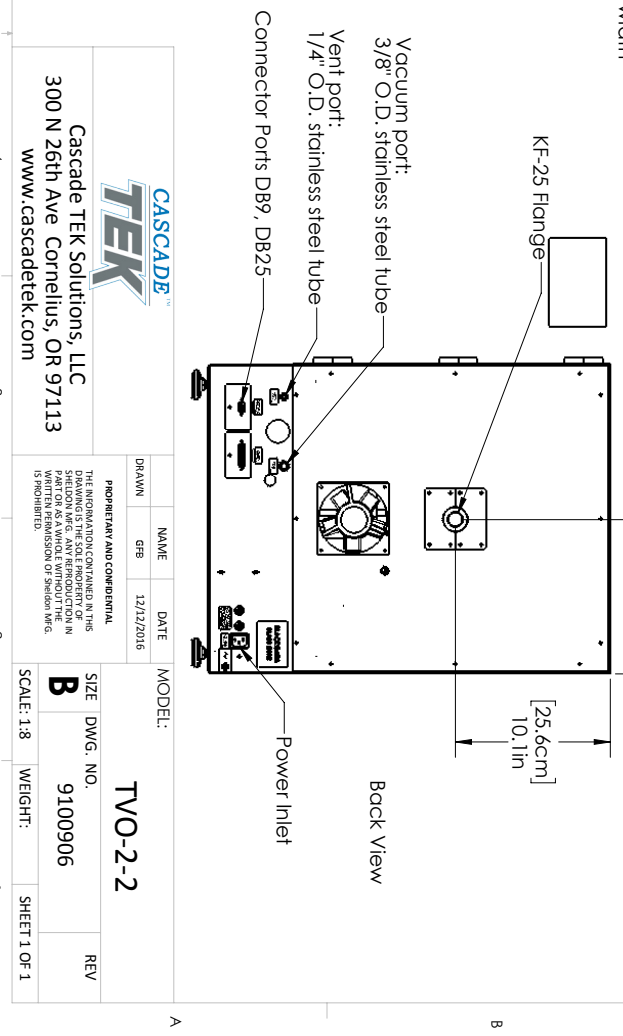
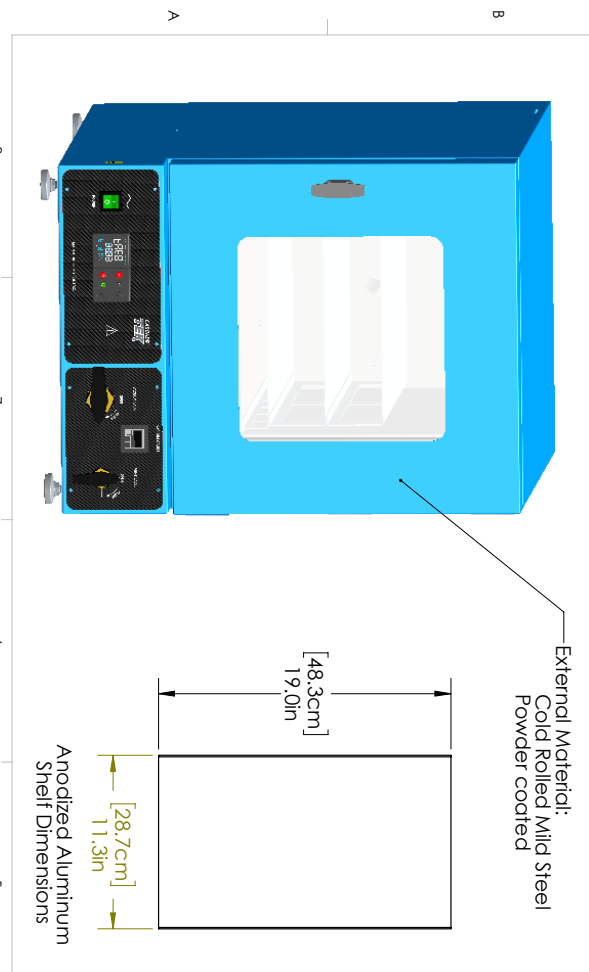
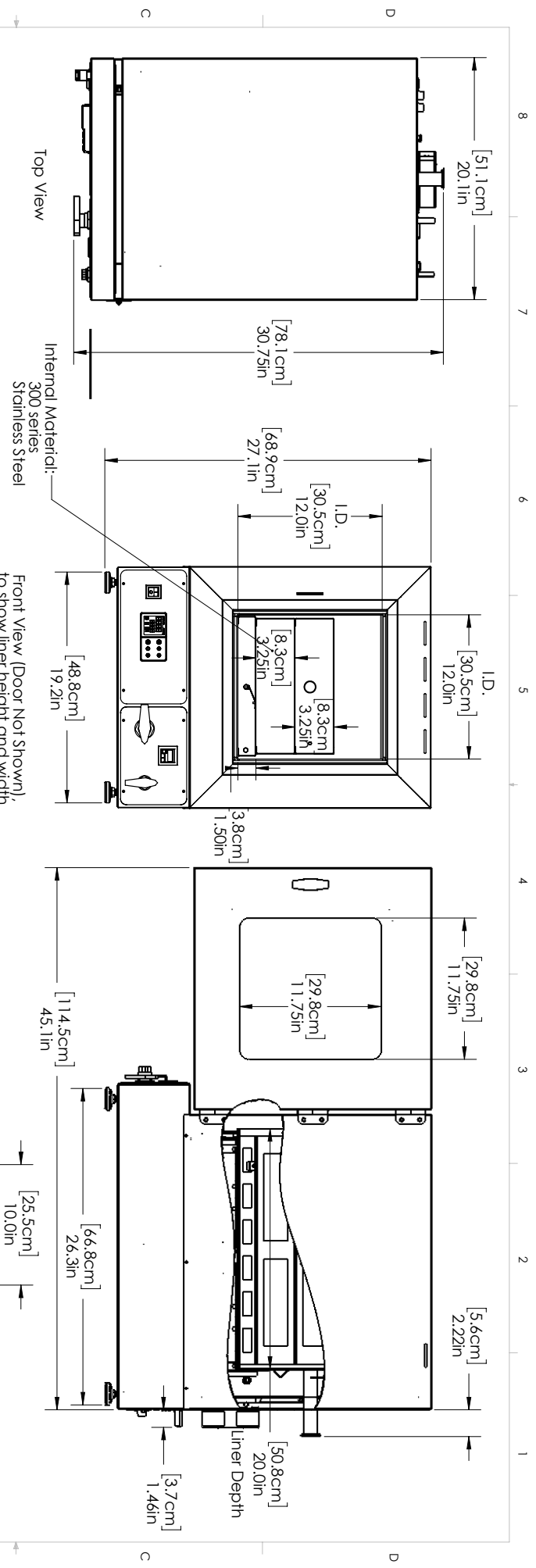
C US CE



0740583 2/20

Contact Cascade TEK

sales@cascadetek.com • cascadetek.com • +1-971-371-4096



		NAME	DATE	MODEL:	
		DRAWN	12/12/2016	TVO-2-2	
Cascade TEK Solutions, LLC 300 N 26th Ave Cornelius, OR 97113 www.cascadetek.com		<small> PROPRIETARY AND CONFIDENTIAL THE INFORMATION CONTAINED IN THIS SHEET IS UNCLASSIFIED EXCEPT WHERE SHOWN AS A RESULT OF THE DECLASSIFICATION PROCESS. ANY REPRODUCTION IN WHOLE OR IN PART IS PROHIBITED. </small>	SIZE B	DWG. NO. 9100906	REV
SCALE: 1:8		WEIGHT:	SHEET 1 OF 1		