

Forced Air Oven

TFO-5

PART ID: CTF522



Capacity	4.9 cu.ft. (138.0 liters)
Interior Dimensions W x D x H	21.0" x 19.4" x 20.7" 533 x 494 x 527mm
Exterior Dimensions W x D x H	31.4" x 28.1" x 38.8" 798 x 714 x 986mm
Unit Weight	208 lbs (94.3kg)
Shipping Weight	258 lbs (117kg)
Shelves	3 standard, 9 total
Maximum Weight Per Shelf	50 lbs/22.6kg
Permitted Total Load	200 lbs/91kg
Standard Door Gasket	Woven Fiberglass Fluorocarbon coated 300°C Max
Access Port	1.75" Rear
Controls	Watlow EZ-ZONE
Warranty	100% 2 Year
Interior Construction	300 series stainless steel
Exterior Construction	20 gauge steel, powder coated
Vertical Clearance	24.0" (600mm)
Wall Clearance, Each Side	6.0" (152mm)
Wall Clearance, Rear	12.0" (300mm)

Electrical, 50/60Hz, AC, 1Ø

Voltage	110V-120V
Full Load Amps	14
Nominal Power (watts @150°C)	700
Recommended Breaker, Amps	15
NEMA Plug Supplied	5-15P

Energy Consumption (kWh/day)

At 80°C	7.5
At 150°C	13.5
At 306°C	23.8

Temperature Range 15°C above ambient to 306°C

Heat-Up Time — Minutes to 80°C	9.0
Heat-Up Time — Minutes to 150°C	28.0
Heat-Up Time — Minutes to 306°C	130.0
Recovery after Door Opening (30 sec.) — Minutes to 80°C	2.0
Recovery after Door Opening (30 sec.) — Minutes to 150°C	4.0
Recovery after Door Opening (30 sec.) — Minutes to 306°C	45.0
Recovery after Door Opening (60 sec.) — Minutes to 80°C	3.5
Recovery after Door Opening (60 sec.) — Minutes to 150°C	6.0
Recovery after Door Opening (60 sec.) — Minutes to 306°C	57.0

Temperature Uniformity

At 80°C	0.75°C
At 150°C	1.80°C
At 306°C	4.50°C

Air Flow Performance

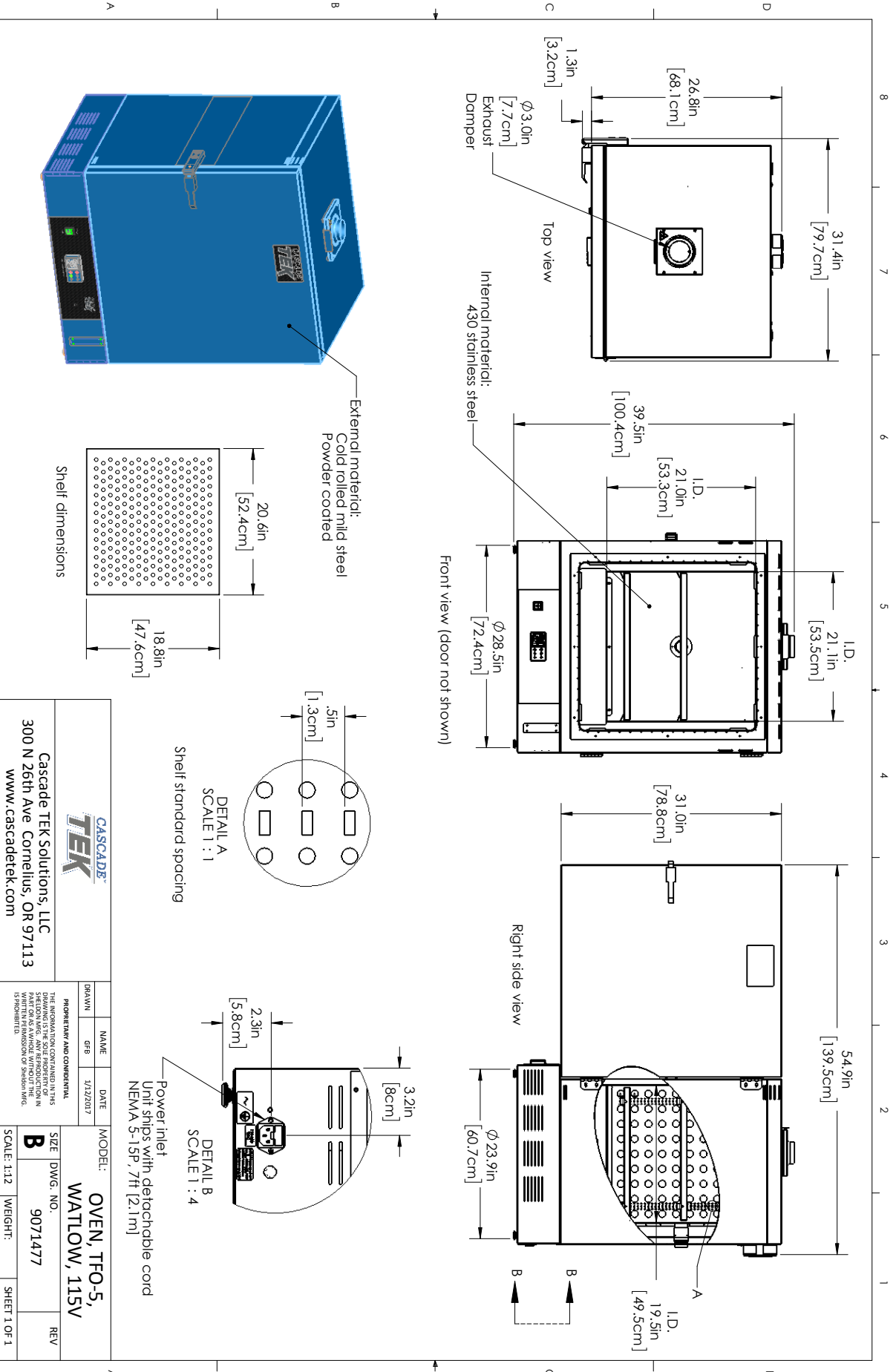
Air Changes Per Hr at Max	180
Flow Rate (CFM)	15.2

MADE IN
USA



Contact Cascade TEK

Email: sales@cascadetek.com • Website: www.cascadetek.com • Phone: +1-971-371-4096



CASCADE TEK		Cascade TEK Solutions, LLC 300 N 26th Ave Cornelius, OR 97113 www.cascadetek.com	
DATE	1/12/2017	MODEL:	OVEN, TFO-5, WATLOW, 115V
NAME		SIZE	DWG. NO. 9071477
DRAWN		SCALE:	1:12
<small>THE INFORMATION CONTAINED IN THIS DRAWING IS THE SOLE PROPERTY OF CASCADE TEK SOLUTIONS, LLC. IT IS TO BE USED FOR THE PART OR AS A WHOLE WITHOUT THE WRITTEN PERMISSION OF CASCADE TEK SOLUTIONS, LLC.</small>		WEIGHT:	
		SHEET 1 OF 1	