

# Forced Air Oven

## TFO-5-2

PART ID: CTF522-EA



Capacity	4.9 cu.ft. (138.0 liters)
Interior Dimensions W x D x H	21.0" x 19.4" x 20.7" 533 x 494 x 527mm
Exterior Dimensions W x D x H	31.4" x 28.1" x 38.8" 798 x 714 x 986mm
Unit Weight	208 lbs (94.3kg)
Shipping Weight	258 lbs (117kg)
Shelves	3 standard, 9 total
Maximum Weight Per Shelf	50 lbs/22.6kg
Permitted Total Load	200 lbs/91kg
Standard Door Gasket	Woven Fiberglass Fluorocarbon coated 300°C Max
Access Port	1.75" Rear
Controls	Watlow EZ-ZONE
Warranty	100% 2 Year
Interior Construction	300 series stainless steel
Exterior Construction	20 gauge steel, powder coated
Vertical Clearance	24.0" (600mm)
Wall Clearance, Each Side	6.0" (152mm)
Wall Clearance, Rear	12.0" (300mm)
<b>Electrical, 50/60Hz, AC, 1Ø</b>	
Voltage	220V-240V
Full Load Amps	10
Nominal Power (watts @150°C)	725
Recommended Breaker, Amps	15
NEMA Plug Supplied	6-15P
<b>Energy Consumption (kWh/day)</b>	
At 80°C	6.7
At 150°C	12.7
At 306°C	22.7
<b>Temperature Range 15°C above ambient to 306°C</b>	
Heat-Up Time — Minutes to 80°C	6.0
Heat-Up Time — Minutes to 150°C	28.0
Heat-Up Time — Minutes to 306°C	80.0
Recovery after Door Opening (30 sec.) — Minutes to 80°C	2.0
Recovery after Door Opening (30 sec.) — Minutes to 150°C	3.0
Recovery after Door Opening (30 sec.) — Minutes to 306°C	20.0
Recovery after Door Opening (60 sec.) — Minutes to 80°C	3.0
Recovery after Door Opening (60 sec.) — Minutes to 150°C	5.5
Recovery after Door Opening (60 sec.) — Minutes to 306°C	26.0
<b>Temperature Uniformity</b>	
At 80°C	0.75°C
At 150°C	1.50°C
At 306°C	3.50°C
<b>Air Flow Performance</b>	
Air Changes Per Hr at Max	180
Flow Rate (CFM)	15.2



MADE IN  
USA

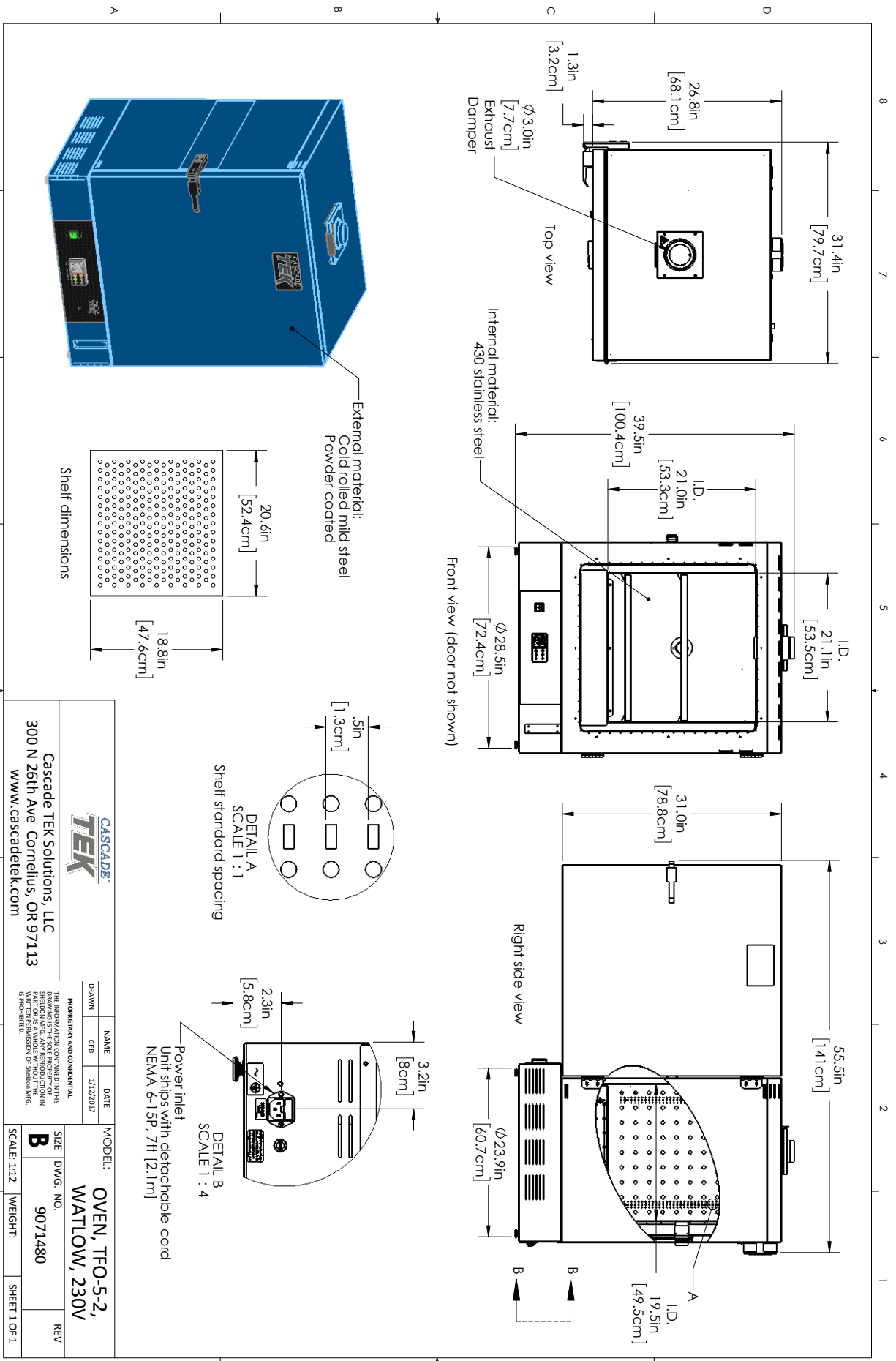


C US



Contact Cascade TEK

Email: sales@cascadetek.com • Website: www.cascadetek.com • Phone: +1-971-371-4096



		<b>Cascade TEK Solutions, LLC</b> 300 N 26th Ave Cornelius, OR 97113 <a href="http://www.cascadetek.com">www.cascadetek.com</a>	
<small>PROPRIETARY AND CONFIDENTIAL</small> <small>THE INFORMATION CONTAINED IN THIS DRAWING IS THE PROPERTY OF CASCADE TEK SOLUTIONS, LLC. ANY REPRODUCTION OR TRANSMISSION IN ANY FORM OR BY ANY MEANS IS PROHIBITED.</small>	NAME: GFB DATE: 1/12/2017	MODEL: <b>OVEN, TFO-5-2, WATLOW, 230V</b>	SIZE: <b>B</b> DWG. NO.: 9071480 SCALE: 1:12 WEIGHT:
DRAWN:		REV:	
SHEET 1 OF 1		SHEET 1 OF 1	