

Forced Air Oven

TFO-5-2

PART ID: CTF522-EA

CASCADE™

TEK

| | |
|--|--|
| Capacity | 4.9 cu.ft. (138.0 liters) |
| Interior Dimensions W x D x H | 21.0" x 19.4" x 20.7" 533 x 494 x 527mm |
| Exterior Dimensions W x D x H | 31.4" x 28.1" x 38.8" 798 x 714 x 986mm |
| Unit Weight | 208 lbs (94.3kg) |
| Shipping Weight | 258 lbs (117kg) |
| Shelves | 3 standard, 9 total |
| Maximum Weight Per Shelf | 50 lbs/22.6kg |
| Permitted Total Load | 200 lbs/91kg |
| Standard Door Gasket | Woven Fiberglass Fluorocarbon coated 300°C Max |
| Access Port | 1.75" Rear |
| Controls | Watlow EZ-ZONE |
| Warranty | 100% 2 Year |
| Interior Construction | 300 series stainless steel |
| Exterior Construction | 20 gauge steel, powder coated |
| Vertical Clearance | 24.0" (600mm) |
| Wall Clearance, Each Side | 6.0" (152mm) |
| Wall Clearance, Rear | 12.0" (300mm) |
| Electrical, 50/60Hz, AC, 1Ø | |
| Voltage | 220V-240V |
| Full Load Amps | 10 |
| Nominal Power (watts @150°C) | 725 |
| Recommended Breaker, Amps | 15 |
| NEMA Plug Supplied | 6-15P |
| Energy Consumption (kWh/day) | |
| At 80°C | 6.7 |
| At 150°C | 12.7 |
| At 306°C | 22.7 |
| Temperature Range 15°C above ambient to 306°C | |
| Heat-Up Time — Minutes to 80°C | 6.0 |
| Heat-Up Time — Minutes to 150°C | 28.0 |
| Heat-Up Time — Minutes to 306°C | 80.0 |
| Recovery after Door Opening (30 sec.) — Minutes to 80°C | 2.0 |
| Recovery after Door Opening (30 sec.) — Minutes to 150°C | 3.0 |
| Recovery after Door Opening (30 sec.) — Minutes to 306°C | 20.0 |
| Recovery after Door Opening (60 sec.) — Minutes to 80°C | 3.0 |
| Recovery after Door Opening (60 sec.) — Minutes to 150°C | 5.5 |
| Recovery after Door Opening (60 sec.) — Minutes to 306°C | 26.0 |
| Temperature Uniformity | |
| At 80°C | 0.75°C |
| At 150°C | 1.50°C |
| At 306°C | 3.50°C |
| Air Flow Performance | |
| Air Changes Per Hr at Max | 180 |
| Flow Rate (CFM) | 15.2 |



MADE IN
USA

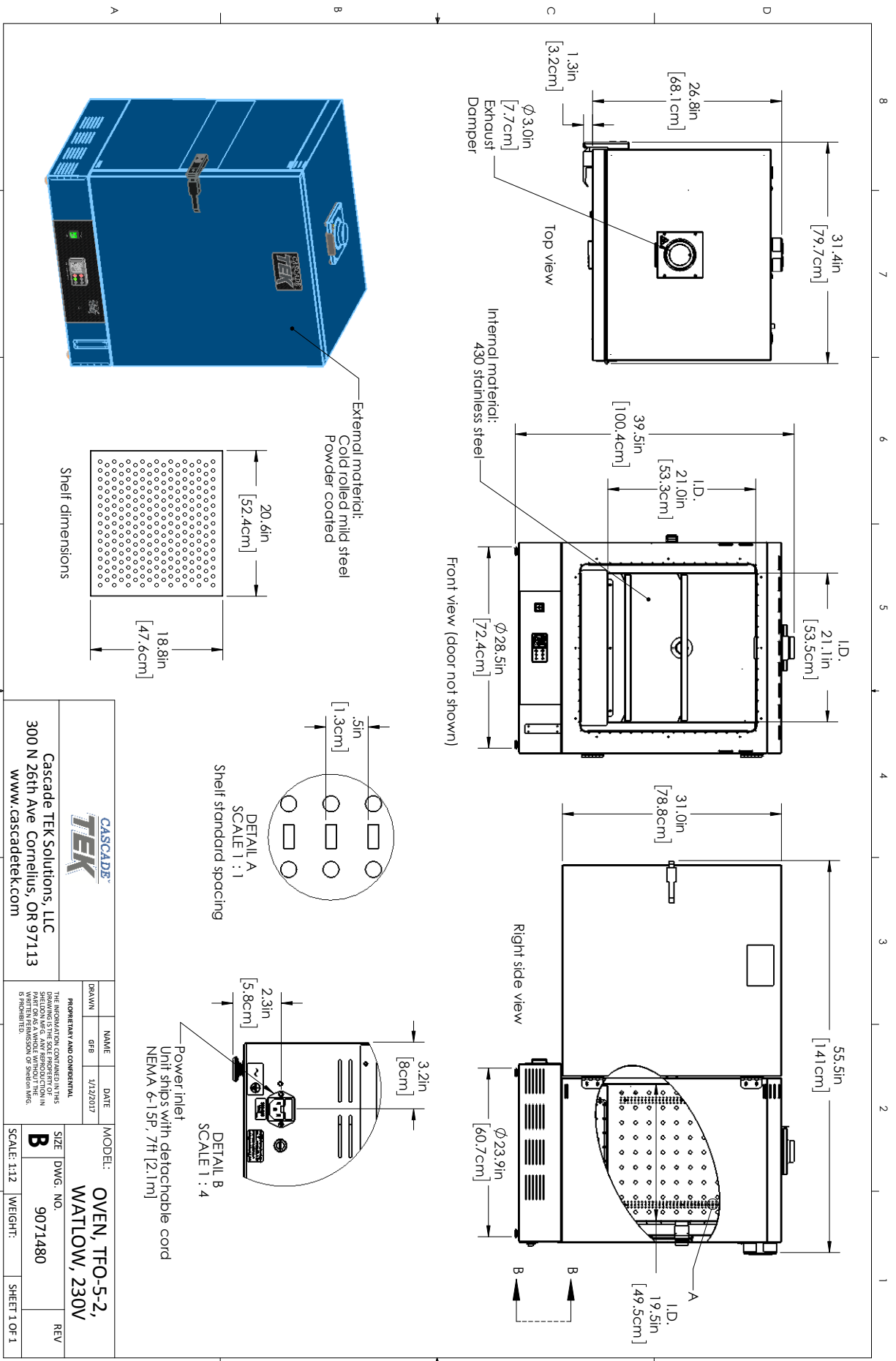


C US



Contact Cascade TEK

Email: sales@cascadetek.com • Website: www.cascadetek.com • Phone: +1-971-371-4096



| | | | |
|--|---------|--|--|
| | | Cascade TEK Solutions, LLC 300 N 26th Ave Cornelius, OR 97113 www.cascadetek.com | |
| DRAWN | NAME | DATE | MODEL: |
| GFB | | 1/12/2017 | OVEN, TFO-5-2, WATLOW, 230V |
| <small>PROPRIETARY AND CONFIDENTIAL THE INFORMATION CONTAINED IN THIS DRAWING IS THE SOLE PROPERTY OF CASCADE TEK SOLUTIONS, LLC. ANY REPRODUCTION OR TRANSMISSION IN ANY FORM OR BY ANY MEANS IS PROHIBITED.</small> | | SIZE | DWG. NO. |
| | | B | 9071480 |
| SCALE: 1:12 | WEIGHT: | REV | |
| | | | SHEET 1 OF 1 |