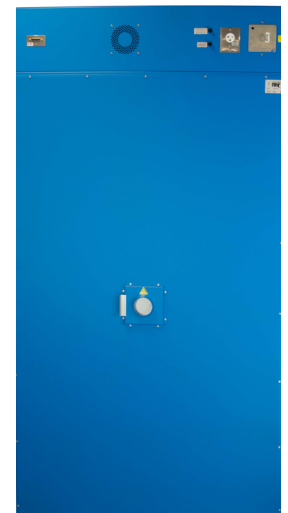


Forced Air Oven

TFO-28

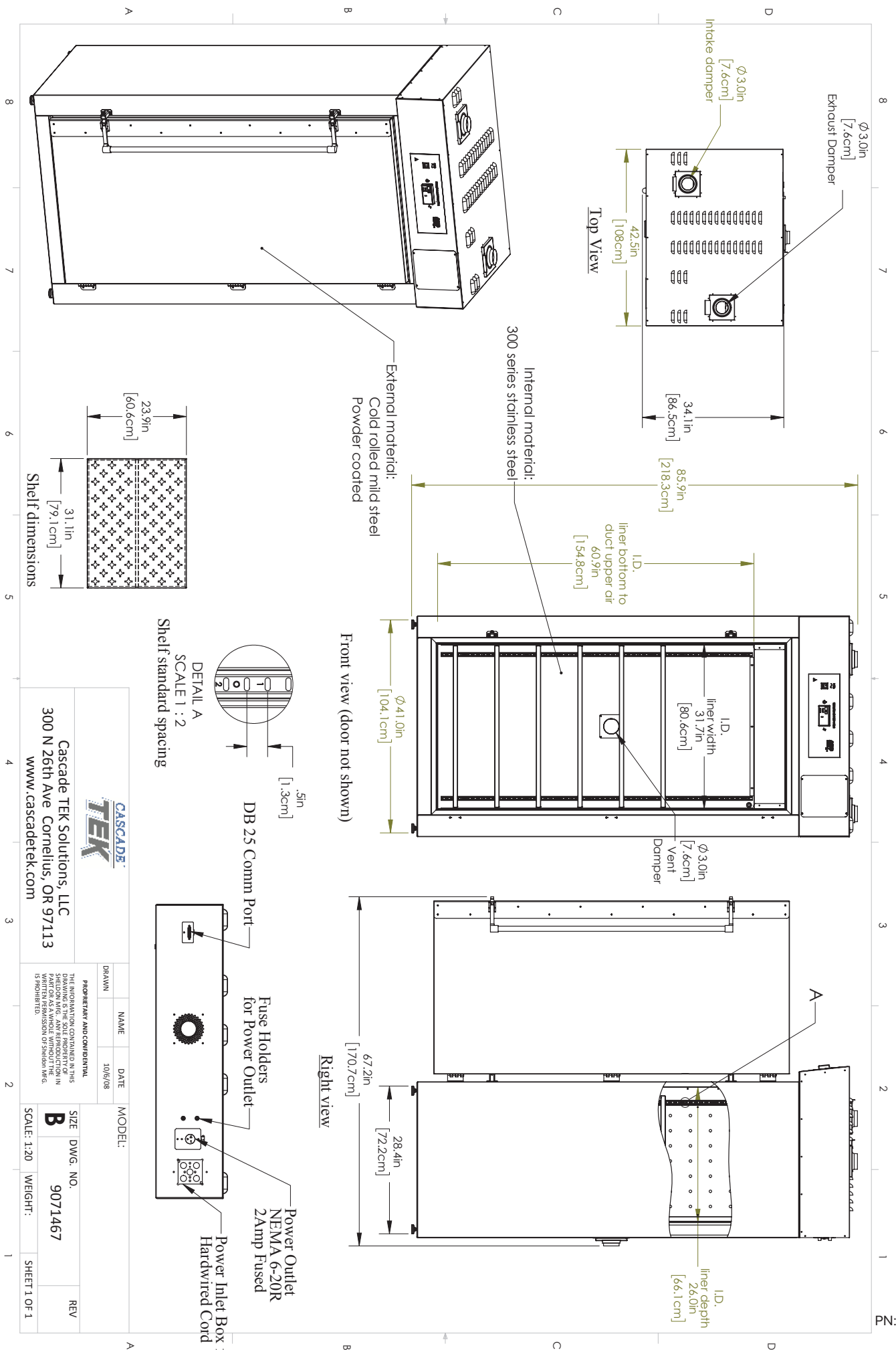


Capacity	28 cu.ft. (792 liters)
Interior Dimensions W x D x H	31.7" x 26.0" x 60.9" 805 x 660 x 1546mm
Exterior Dimensions W x D x H	42.5" x 34.1" x 85.9" 1080 x 866 x 2182mm
Unit Weight	563 lbs (255kg)
Shipping Weight	694 lbs (315kg)
Shelves	6 standard, 9 total
Maximum Weight Per Shelf	75 lbs/34kg
Permitted Total Load	450 lbs/204kg
Standard Door Gasket	Woven Fiberglass Fluorocarbon coated 300°C Max
Access Port	2.75" Rear
Controls	Watlow EZ-ZONE
Warranty	100% 2 Year
Interior Construction	300 series stainless steel
Exterior Construction	20 gauge steel, powder coated
Vertical Clearance	24.0" (600mm)
Wall Clearance, Each Side	6.0" (152mm)
Wall Clearance, Rear	12.0" (300mm)
Electrical, 50/60Hz, AC, 1Ø	
Voltage	220V-240V
Full Load Amps	50
Nominal Power (watts @150°C)	6500
Direct Hardwire	✓
Energy Consumption (kWh/day)	
At 80°C	48.1
At 150°C	108.8
At 306°C	243.8
Temperature Range 15°C above ambient to 306°C	
Heat-Up Time — Minutes to 80°C	6.0
Heat-Up Time — Minutes to 150°C	15.0
Heat-Up Time — Minutes to 306°C	31.0
Recovery after Door Opening (30 sec.) — Minutes to 80°C	3.0
Recovery after Door Opening (30 sec.) — Minutes to 150°C	3.0
Recovery after Door Opening (30 sec.) — Minutes to 306°C	5.0
Recovery after Door Opening (60 sec.) — Minutes to 80°C	5.0
Recovery after Door Opening (60 sec.) — Minutes to 150°C	5.5
Recovery after Door Opening (60 sec.) — Minutes to 306°C	10.0
Temperature Uniformity	
At 80°C	1.0
At 150°C	2.5
At 306°C	5.0
Air Flow Performance	
Air Changes Per Hr at Max	125.0
Flow Rate (CFM)	17.3



Contact Cascade TEK

Email: sales@cascadetek.com • Website: www.cascadetek.com • Phone: +1-971-371-4096



Cascade TEK Solutions, LLC
 300 N 26th Ave. Cornelius, OR 97113
 www.cascadetek.com

PROPRIETARY AND CONFIDENTIAL		DATE	MODEL:
DRAWN	NAME	10/6/08	
THE INFORMATION CONTAINED IN THIS DRAWING IS THE PROPERTY OF CASCADE TEK SOLUTIONS, LLC. ANY REPRODUCTION OR TRANSMISSION OF THIS INFORMATION IN ANY MANNER WITHOUT THE WRITTEN PERMISSION OF CASCADE TEK SOLUTIONS, LLC IS PROHIBITED.			
SIZE	DWG. NO.	REV	
B	9071467		
SCALE: 1:20	WEIGHT:	SHEET 1 OF 1	