

Forced Air Oven

TFO-10



Capacity	10 cu.ft. (283 liters)
Interior Dimensions W x D x H	30.0" x 19.0" x 30.1" 762 x 482 x 764mm
Exterior Dimensions W x D x H	44.1" x 29.9" x 56.7" 1121 x 760 x 1440mm
Unit Weight	357 lbs (162.8kg)
Shipping Weight	449 lbs (204kg)
Shelves	3 standard, 6 total
Maximum Weight Per Shelf	75 lbs/34kg
Permitted Total Load	225 lbs/102kg
Standard Door Gasket	Woven Fiberglass Fluorocarbon coated 300°C Max
Access Port	2.75" Rear
Controls	Watlow EZ-ZONE
Warranty	100% 2 Year
Interior Construction	300 series stainless steel
Exterior Construction	20 gauge steel, powder coated
Vertical Clearance	24.0" (600mm)
Wall Clearance, Each Side	6.0" (152mm)
Wall Clearance, Rear	12.0" (300mm)

Electrical, 50/60Hz, AC, 1Ø

Voltage	220V-240V
Full Load Amps	26
Nominal Power (watts @150°C)	2000
Direct Hardwire	✓

Energy Consumption (kWh/day)

At 80°C	24.1
At 150°C	54.8
At 306°C	123.3

Temperature Range 15°C above ambient to 306°C

Heat-Up Time — Minutes to 80°C	6.0
Heat-Up Time — Minutes to 150°C	14.0
Heat-Up Time — Minutes to 306°C	31.0
Recovery after Door Opening (30 sec.) — Minutes to 80°C	3.0
Recovery after Door Opening (30 sec.) — Minutes to 150°C	3.0
Recovery after Door Opening (30 sec.) — Minutes to 306°C	6.0
Recovery after Door Opening (60 sec.) — Minutes to 80°C	5.0
Recovery after Door Opening (60 sec.) — Minutes to 150°C	6.0
Recovery after Door Opening (60 sec.) — Minutes to 306°C	10.0

Temperature Uniformity

At 80°C	1.5
At 150°C	2.5
At 306°C	5.5

Air Flow Performance

Air Changes Per Hr at Max	120.0
Flow Rate (CFM)	16.9

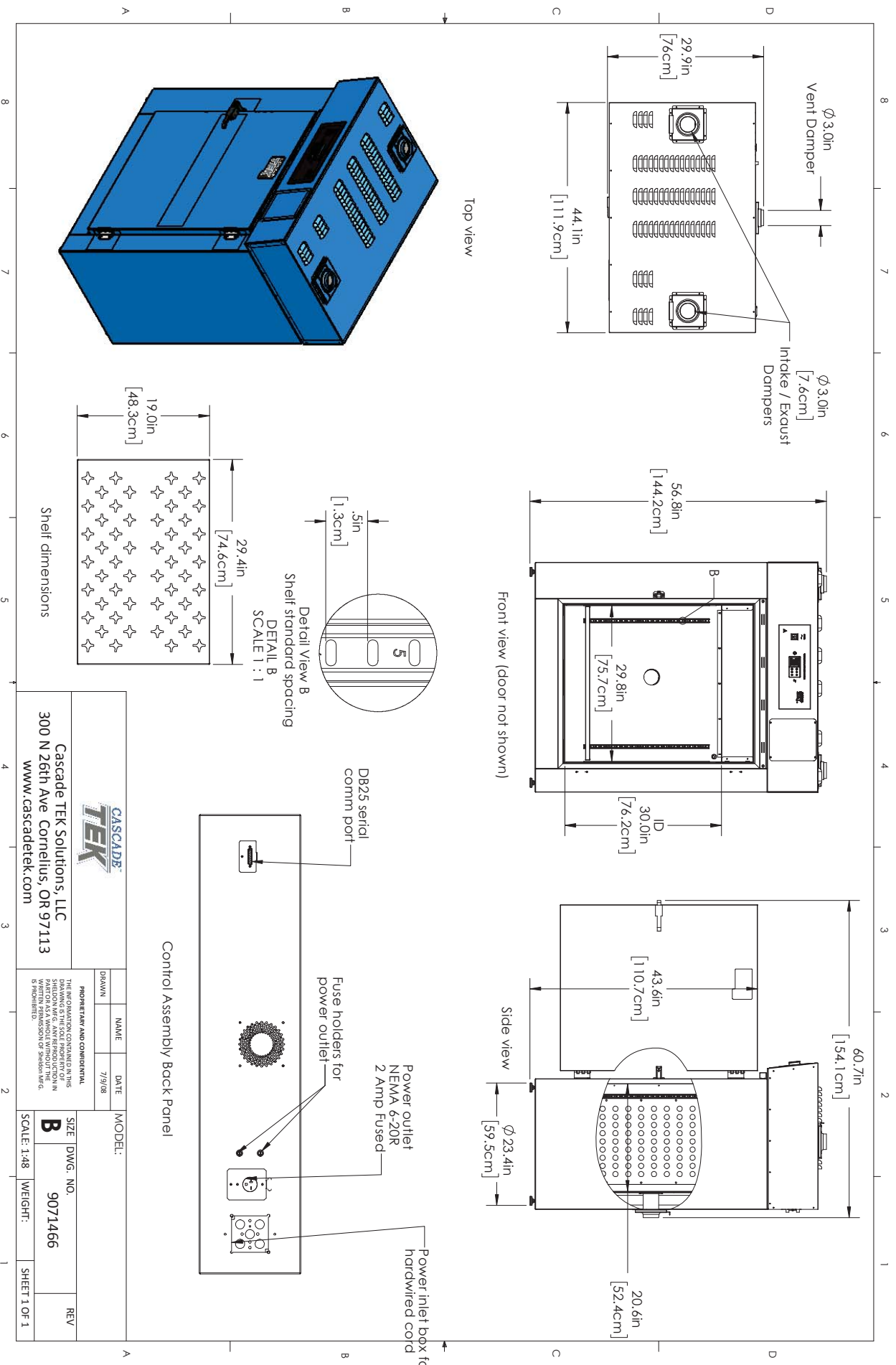


MADE IN
USA



Contact Cascade TEK

Email: sales@cascadetek.com • Website: www.cascadetek.com • Phone: +1-971-371-4096



		Cascade TEK Solutions, LLC 300 N 26th Ave. Cornelius, OR 97113 www.cascadetek.com	
PROPRIETARY AND CONFIDENTIAL	THE INFORMATION CONTAINED IN THIS DRAWING IS THE PROPERTY OF CASCADDE TEK SOLUTIONS, LLC. ANY REPRODUCTION OR TRANSMISSION IN ANY FORM OR BY ANY MEANS WITHOUT THE WRITTEN PERMISSION OF CASCADDE TEK SOLUTIONS, LLC IS PROHIBITED.	DATE: 7/9/08	NAME: [Blank]
MODEL: [Blank]	SIZE: DWG. NO. 9071466	SCALE: 1:48	WEIGHT: [Blank]
SHEET 1 OF 1		REV: [Blank]	