

# Forced Air Oven

**TFO-1**  
PART ID: CTF122



Capacity	1.4 cu.ft. (39.4 liters)
Interior Dimensions W x D x H	12.1" x 13.7" x 14.5" 307 x 349 x 368mm
Exterior Dimensions W x D x H	22.7" x 23.5" x 31.5" 577 x 596 x 800mm
Unit Weight	126.5 lbs (57.4kg)
Shipping Weight	166.5 lbs (76.5kg)
Shelves	2 standard, 6 total
Maximum Weight Per Shelf	50 lbs/22.6kg
Permitted Total Load	100 lbs/45.3kg
Standard Door Gasket	Woven Fiberglass Fluorocarbon coated 300°C Max
Access Port	1.75" Rear
Controls	Watlow EZ-ZONE
Warranty	100% 2 Year
Interior Construction	300 series stainless steel
Exterior Construction	20 gauge steel, powder coated
Vertical Clearance	24.0" (600mm)
Wall Clearance, Each Side	6.0" (152mm)
Wall Clearance, Rear	12.0" (300mm)

## Electrical, 50/60Hz, AC, 1Ø

Voltage	110V-120V
Full Load Amps	12
Nominal Power (watts @150°C)	650
Recommended Breaker, Amps	15
NEMA Plug Supplied	5-15P

## Energy Consumption (kWh/day)

At 80°C	6.5
At 150°C	12.4
At 306°C	19.8

## Temperature Range 15°C above ambient to 306°C

Heat-Up Time — Minutes to 80°C	8.0
Heat-Up Time — Minutes to 150°C	20.0
Heat-Up Time — Minutes to 306°C	52.0
Recovery after Door Opening (30 sec.) — Minutes to 80°C	1.5
Recovery after Door Opening (30 sec.) — Minutes to 150°C	4.5
Recovery after Door Opening (30 sec.) — Minutes to 306°C	14.0
Recovery after Door Opening (60 sec.) — Minutes to 80°C	4.0
Recovery after Door Opening (60 sec.) — Minutes to 150°C	6.0
Recovery after Door Opening (60 sec.) — Minutes to 306°C	20.0

## Temperature Uniformity

At 80°C	1.00°C
At 150°C	2.25°C
At 306°C	4.70°C

## Air Flow Performance

Air Changes Per Hr at Max	330
Flow Rate (CFM)	5.6

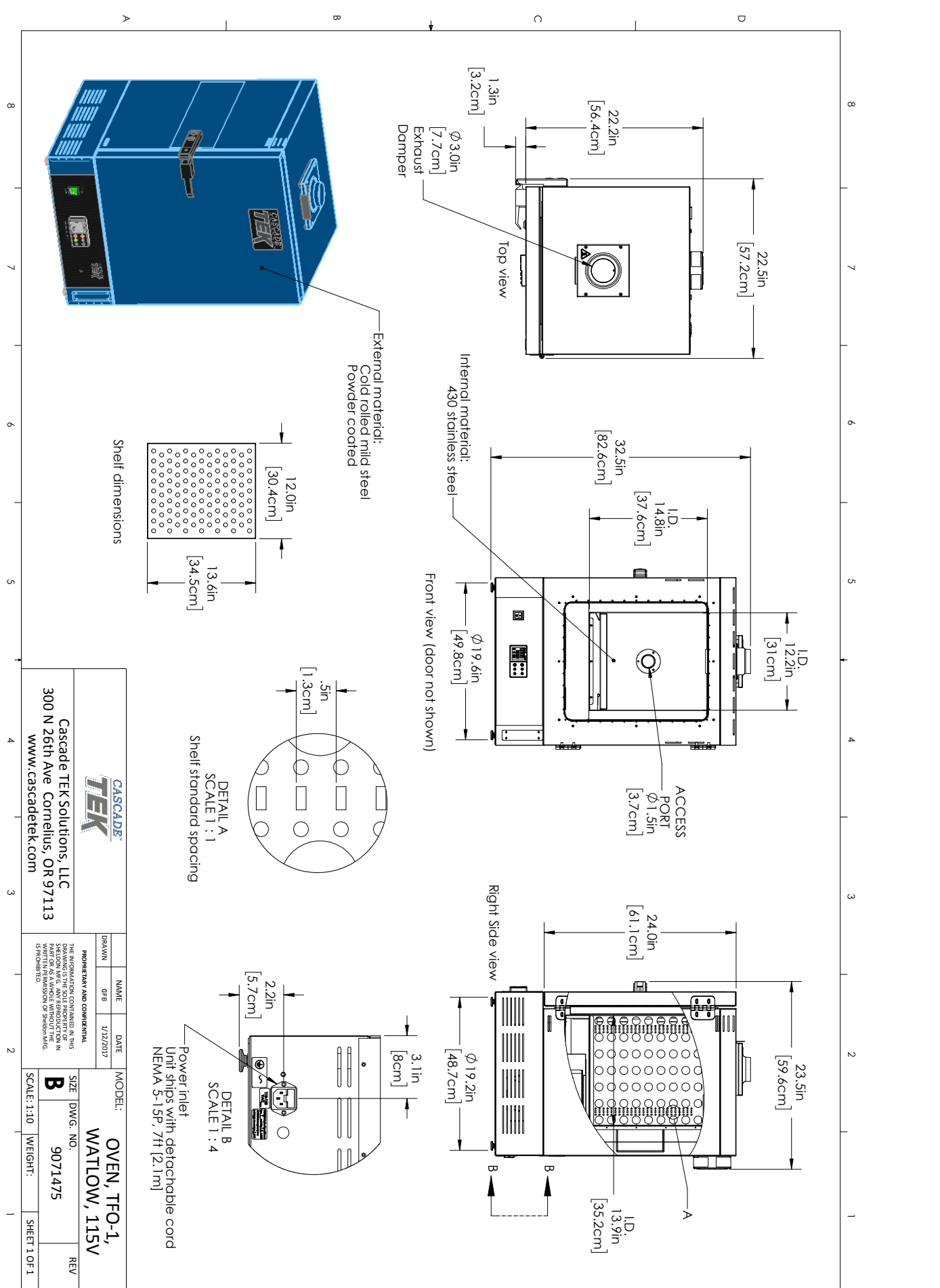


MADE IN  
USA



Contact Cascade TEK

Email: [sales@cascadetek.com](mailto:sales@cascadetek.com) • Website: [www.cascadetek.com](http://www.cascadetek.com) • Phone: +1-971-371-4096



<b>CASCADE TEK</b>		<b>PROPRIETARY AND CONFIDENTIAL</b>		<b>MODEL:</b>
Cascade TEK Solutions, LLC 300 N 26th Ave Cornelius, OR 97113 www.cascadetek.com		THE INFORMATION CONTAINED IN THIS SHEET IS UNCLASSIFIED EXCEPT WHERE SHOWN OTHERWISE. ANY REPRODUCTION IN WHOLE OR IN PART WITHOUT THE WRITTEN PERMISSION OF CASCADE TEK IS PROHIBITED.		<b>OVEN, TFO-1, WATLOW, 115V</b>
<b>DRAWN</b>	<b>NAME</b>	<b>DATE</b>	<b>SIZE</b>	<b>DWG. NO.</b>
GF/B		1/12/2017	<b>B</b>	9071475
<b>SCALE:</b> 1:10				<b>WEIGHT:</b>
				<b>REV</b>
				<b>SHEET 1 OF 1</b>