

# Forced Air Oven

**TFO-1-2**  
PART ID: CTF122-EA



|                               |  |
|-------------------------------|--|
| Capacity                      | 1.4 cu.ft. (39.4 liters)                       |
| Interior Dimensions W x D x H | 12.1" x 13.7" x 14.5"<br>307 x 349 x 368mm     |
| Exterior Dimensions W x D x H | 22.7" x 23.5" x 31.5"<br>577 x 596 x 800mm     |
| Unit Weight                   | 126.5 lbs (57.4kg)                             |
| Shipping Weight               | 166.5 lbs (76.5kg)                             |
| Shelves                       | 2 standard, 6 total                            |
| Maximum Weight Per Shelf      | 50 lbs/22.6kg                                  |
| Permitted Total Load          | 100 lbs/45.3kg                                 |
| Standard Door Gasket          | Woven Fiberglass Fluorocarbon coated 300°C Max |
| Access Port                   | 1.75" Rear                                     |
| Controls                      | Watlow EZ-ZONE                                 |
| Warranty                      | 100% 2 Year                                    |
| Interior Construction         | 300 series stainless steel                     |
| Exterior Construction         | 20 gauge steel, powder coated                  |
| Vertical Clearance            | 24.0" (600mm)                                  |
| Wall Clearance, Each Side     | 6.0" (152mm)                                   |
| Wall Clearance, Rear          | 12.0" (300mm)                                  |

## Electrical, 50/60Hz, AC, 1Ø

|                              |           |
|------------------------------|-----------|
| Voltage                      | 220V-240V |
| Full Load Amps               | 8         |
| Nominal Power (watts @150°C) | 650       |
| Recommended Breaker, Amps    | 15        |
| NEMA Plug Supplied           | 6-15P     |

## Energy Consumption (kWh/day)

|          |      |
|----------|------|
| At 80°C  | 5.7  |
| At 150°C | 11.8 |
| At 306°C | 18.8 |

## Temperature Range 15°C above ambient to 306°C

|  |      |
|--|------|
| Heat-Up Time — Minutes to 80°C                           | 8.0  |
| Heat-Up Time — Minutes to 150°C                          | 20.0 |
| Heat-Up Time — Minutes to 306°C                          | 52.0 |
| Recovery after Door Opening (30 sec.) — Minutes to 80°C  | 2.5  |
| Recovery after Door Opening (30 sec.) — Minutes to 150°C | 3.5  |
| Recovery after Door Opening (30 sec.) — Minutes to 306°C | 7.0  |
| Recovery after Door Opening (60 sec.) — Minutes to 80°C  | 3.0  |
| Recovery after Door Opening (60 sec.) — Minutes to 150°C | 4.5  |
| Recovery after Door Opening (60 sec.) — Minutes to 306°C | 9.0  |

## Temperature Uniformity

|          |        |
|----------|--------|
| At 80°C  | 0.75°C |
| At 150°C | 1.80°C |
| At 306°C | 4.00°C |

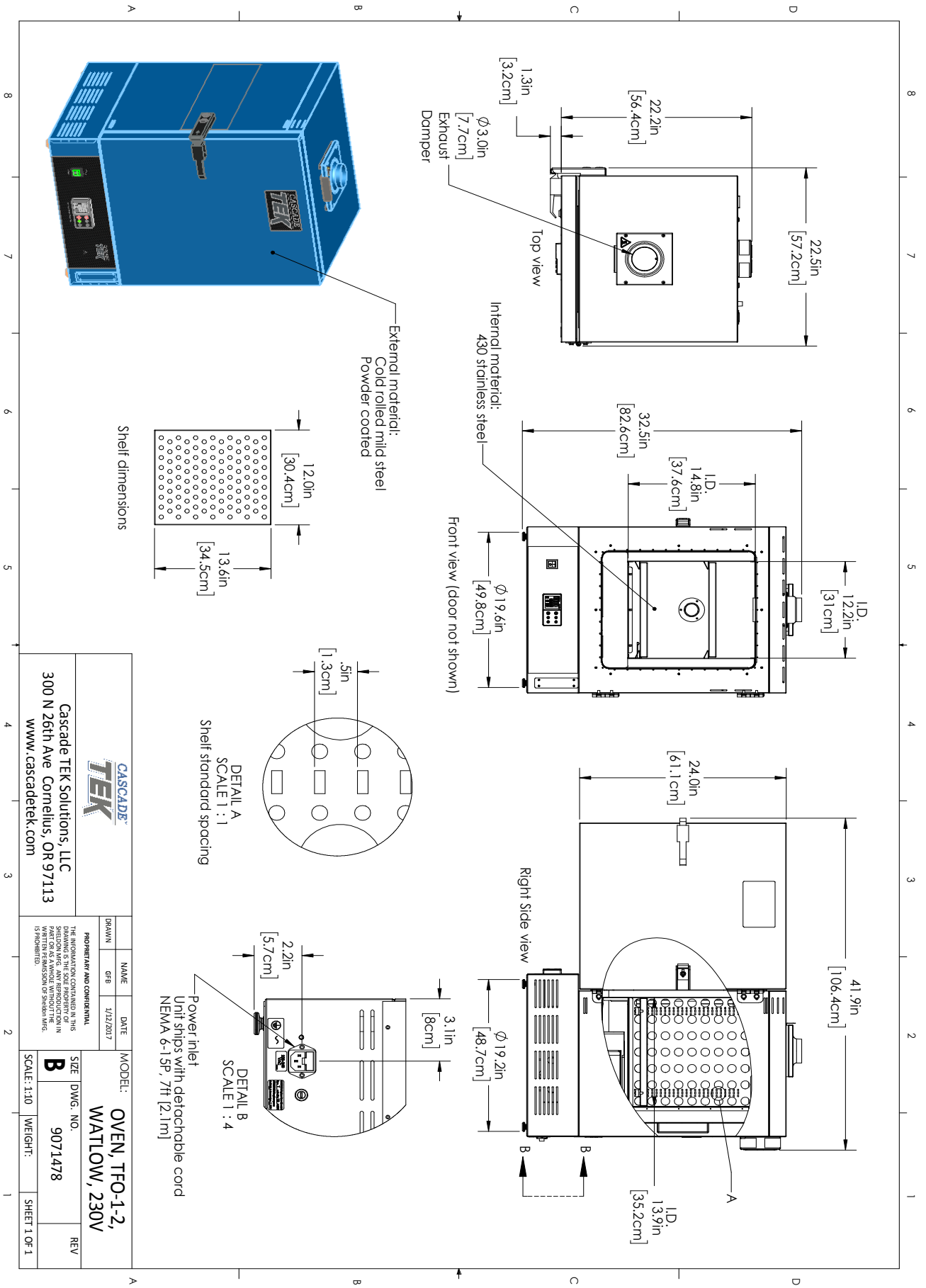
## Air Flow Performance

|                           |     |
|---------------------------|-----|
| Air Changes Per Hr at Max | 330 |
| Flow Rate (CFM)           | 5.6 |



Contact Cascade TEK

Email: sales@cascadetek.com • Website: www.cascadetek.com • Phone: +1-971-371-4096



|   |  |   |  |
|---|--|---|--|
|   |  | Cascade TEK Solutions, LLC<br>300 N 26th Ave. Cornelius, OR 97113<br>www.cascadetek.com |  |
|   |  | PROJECT AND CONTINENTAL<br>DRAWN: GFB<br>NAME: GFB<br>DATE: 1/22/2017                   | MODEL: OVEN, TFO-1-2,<br>WATLOW, 230V<br>SIZE DWG. NO.: 9071478<br>SCALE: 1:10<br>WEIGHT: SHEET 1 OF 1 |
| THE INFORMATION CONTAINED IN THIS SHEET IS THE PROPERTY OF CASCADE TEK SOLUTIONS, INC. AND IS NOT TO BE REPRODUCED OR TRANSMITTED IN ANY FORM OR BY ANY MEANS, ELECTRONIC OR MECHANICAL, INCLUDING PHOTOCOPYING, RECORDING, OR BY ANY INFORMATION STORAGE AND RETRIEVAL SYSTEM, WITHOUT THE WRITTEN PERMISSION OF CASCADE TEK SOLUTIONS, INC. |  |   |  |