

Vacuum Oven

SVO-10-VC

PART ID: CTVR1022-H



Capacity	10.60 cu.ft. (300 liters)
Interior Dimensions (W x D x H)	28.8" x 26" x 24.5" 730 x 660 x 622 mm
Exterior Dimensions (W x D x H)	38.7" x 46.8" x 70.3" 983 x 1189 x 1787 mm
Shipping Weight	1679 lb (762 kg)
Shelves	3 standard, 7 maximum
Standard Door Gasket	Viton Standard
Access Port	1" vacuum port (KF25)
Controls	Watlow F4T
Warranty	2 Year Limited Warranty
Interior Construction	300 series stainless steel
Exterior Construction	20 gauge steel, powder coated
Wall Clearance, Each Side	6.0" (152 mm)
Wall Clearance, Rear	12.0" (305 mm)
Vertical Clearance	12.0" (305 mm)
Electrical, 50/60Hz, AC, 1Ø	
Voltage	220V-240V
Full Load Amps	30
Nominal Power (watts @150°C)	-
Direct Hardwire	✓
Energy Consumption (kWh/day)	
At 80°C	-
At 150°C	-
At 220°C	-
Temperature Range 10°C above ambient to 220°C	
Heat-Up Time — Minutes to 80°C	-
Heat-Up Time — Minutes to 150°C	350
Heat-Up Time — Minutes to 220°C	-
Operation Vacuum Range	Pump Dependent
Temperature Uniformity	+/- 6% of Set Point
Temperature Stability	+/- 0.2°C @ 150°C
Vacuum Display Range	3.8e-10 Torr
Safety Certifications	UL 61010-1, EN 61010-1, CSA 61010-1, CE



MADE IN
USA



CE C US

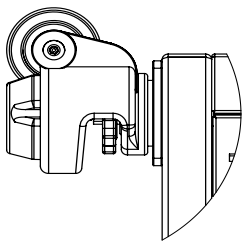
We reserve the right to alter specifications at any time.



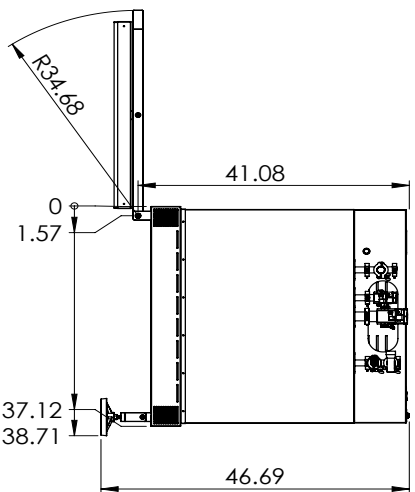
0740617 11/20

Contact Cascade TEK

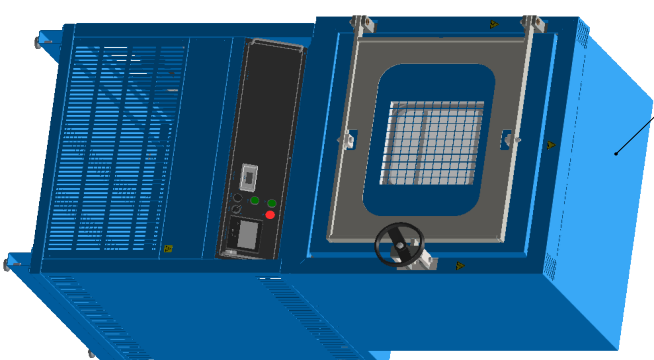
sales@cascadetek.com • cascadetek.com • +1-971-371-4096



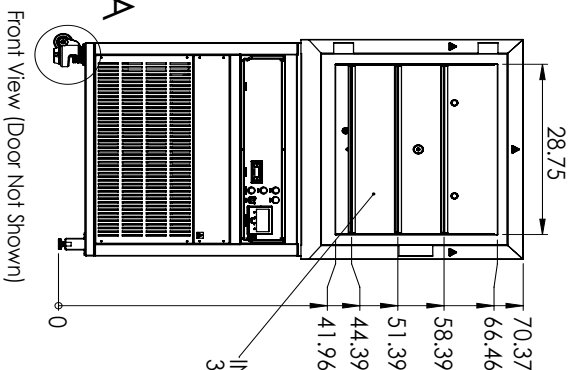
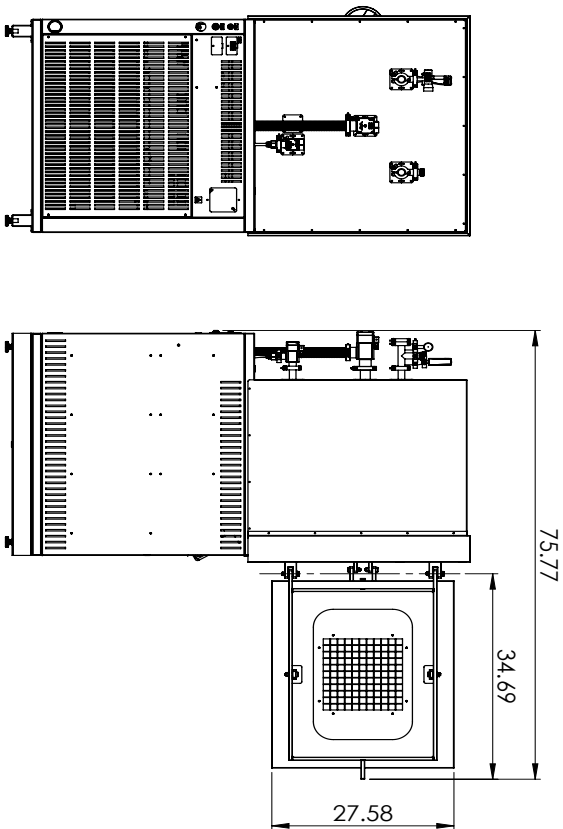
OPTIONAL CASTERS ADD
0.75 IN TO OVER ALL HEIGHT
DETAIL A
SCALE 1 : 4



EXTERNAL MATERIAL:
COLD ROLLED STEEL
POWDER COATED



INTERNAL MATERIAL:
300 SERIES STAINLESS STEEL



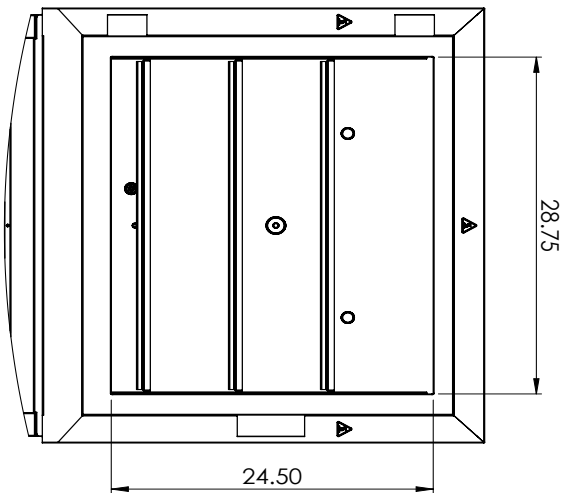
Front View (Door Not Shown)



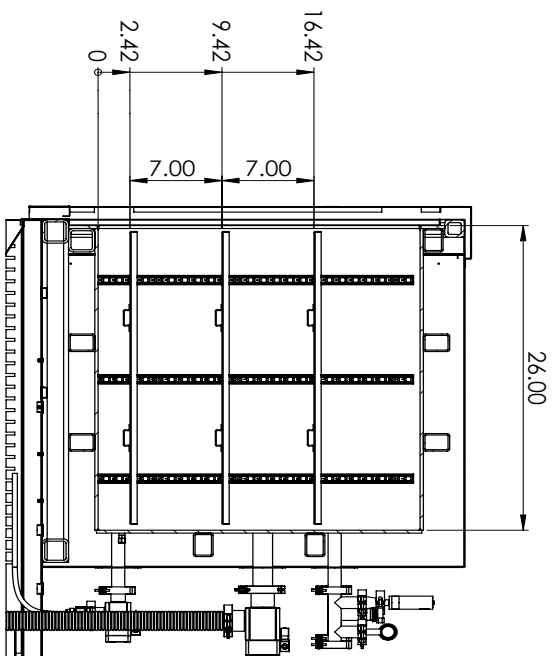
Cascade TEK Solutions, Inc.
2010 Century Center Blvd, Ste 21
Irving, Texas 75062
www.cascadetek.com

PROPRIETARY AND CONFIDENTIAL
THE INFORMATION CONTAINED IN THIS
DRAWING IS THE SOLE PROPERTY OF
CASCADE TEK SOLUTIONS, INC. AND IS
NOT TO BE REPRODUCED OR USED IN
ANY MANNER WITHOUT THE
WRITTEN PERMISSION OF SHINDEN MFG.
CO., LTD.

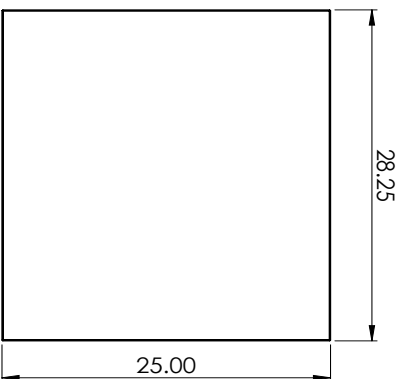
MODEL:		SVO-10-VC	
NAME	DATE	SIZE	DWG. NO.
GT	12/18/2019	B	9101012
SCALE: 1:20		WEIGHT:	REV
SHEET 1 OF 4			



Front Inside View



Side Section View



Shelf Dimensions



Cascade TEK Solutions, Inc.
2010 Century Center Blvd, Ste 21
Irving, Texas 75062
www.cascadetek.com

NAME	DATE
DRAWN GT	12/18/2019

PROPRIETARY AND CONFIDENTIAL
THE INFORMATION CONTAINED IN THIS
DRAWING IS THE SOLE PROPERTY OF
CASCADE TEK. ANY REPRODUCTION
OR TRANSMISSION IN ANY FORM OR
BY ANY MEANS, WITHOUT THE
WRITTEN PERMISSION OF Cascade TEK,
IS PROHIBITED.

MODEL:
SVO-10-VC

SIZE DWG. NO.
B 9101012

REV

SCALE: 1:10 WEIGHT: SHEET 2 OF 4