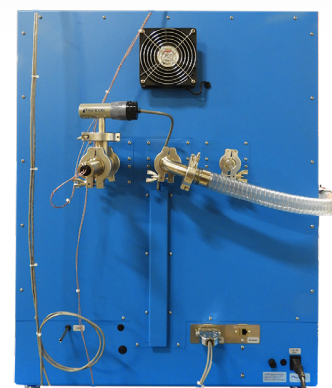


Vacuum Oven

TVO-5-2-SV
PART ID: CTVS523-EA

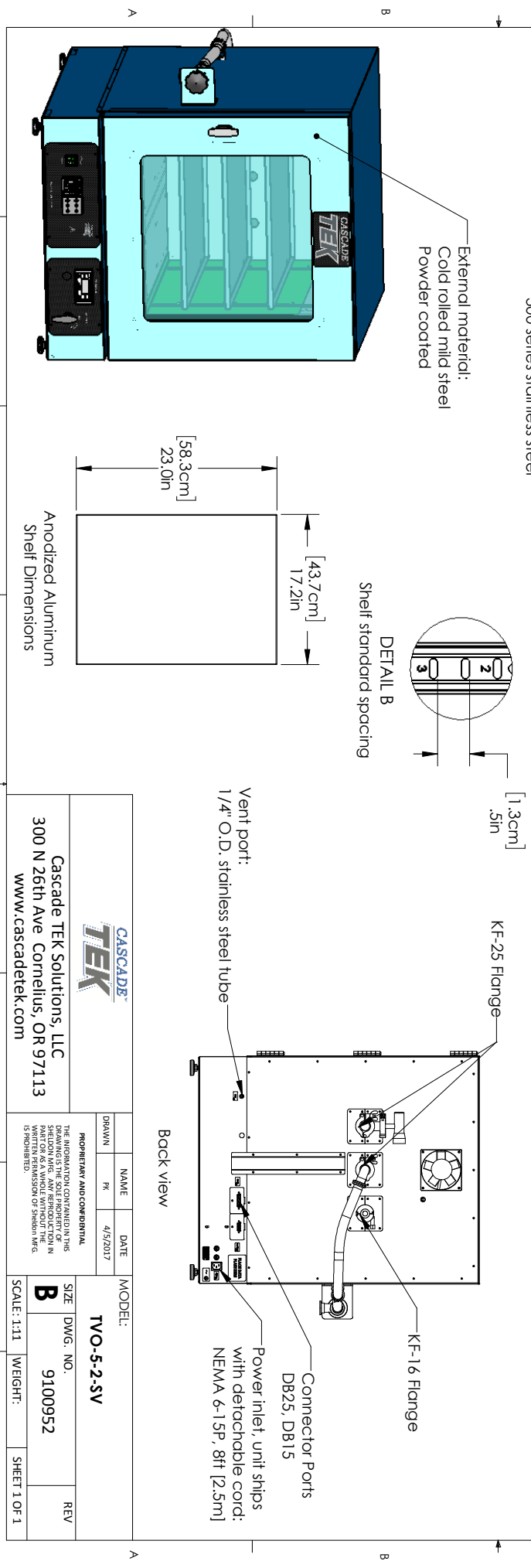
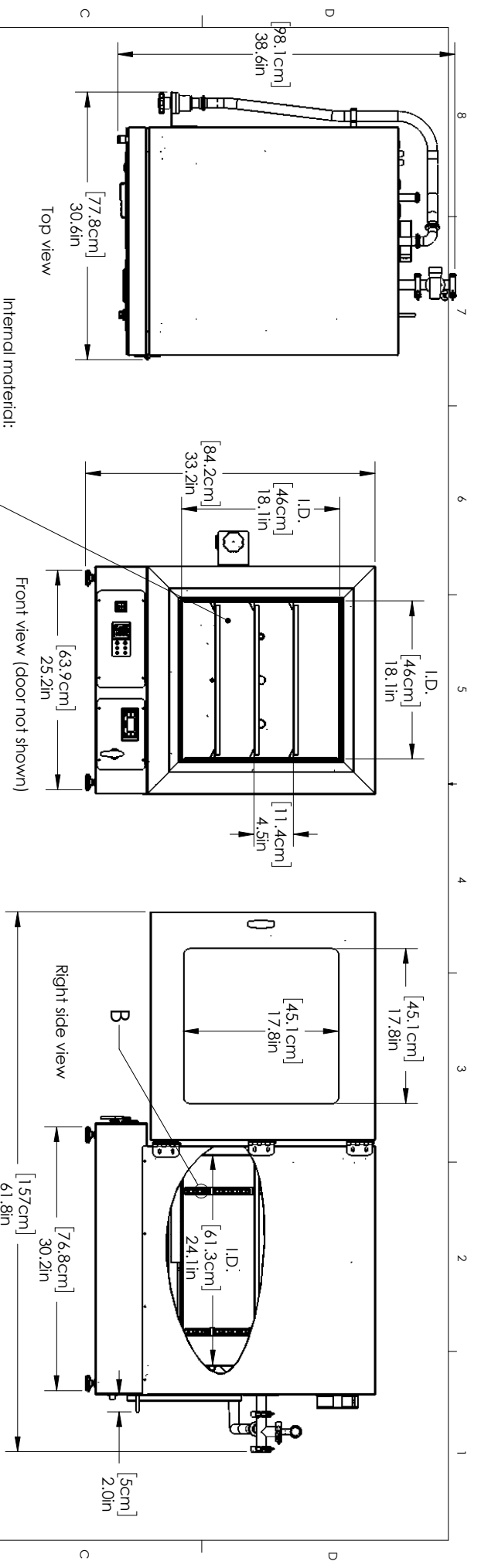


Capacity	4.5 cu.ft. (127.4 liters)
Interior Dimensions (W x D x H)	18.1" x 24.1" x 18.1" 459 x 612 x 459 mm
Exterior Dimensions (W x D x H)	31.1" x 38.6" x 33.2" 790 x 981 x 844 mm
Unit Weight	365 lbs (166 kg)
Shipping Weight	460 lbs (209 kg)
Shelves	3 standard, 6 total
Maximum Weight Per Shelf	35 lb / 15.8 kg
Permitted Total Load	105 lb / 47.6 kg
Standard Door Gasket	Silicone Standard
Access Port	1" vacuum port (KF-25)
Controls	Watlow PM9 Plus
Warranty	2 Year Limited Warranty
Interior Construction	300 series stainless steel
Exterior Construction	Painted Cold Roll Steel
Wall Clearance, Each Side	6.0" (152 mm)
Wall Clearance, Rear	12.0" (305 mm)
Vertical Clearance	12.0" (305 mm)
Electrical, 50/60Hz, AC, 1Ø	
Voltage	220V-240V
Full Load Amps	7.0
Nominal Power (watts @150°C)	936
Plug Supplied	EU 1-16P; NEMA 6-15P
Energy Consumption (kWh/day)	
At 80°C	18.1
At 150°C	21.8
At 220°C	34.5
Temperature Range 10°C above ambient to 220°C	
Heat-Up Time — Minutes to 80°C	70
Heat-Up Time — Minutes to 150°C	120
Heat-Up Time — Minutes to 220°C	175
Temperature Uniformity	+/- 6% of Set Point
Temperature Stability	+/- 0.25°C @ 150°C
Operational Vacuum Range	720 to less than 20 mTorr @ 150°C
Vacuum Display Range	1100 to 0.1 mTorr
Safety Certifications	UL 61010-1, EN 61010-1, CSA 61010-1, CE



We reserve the right to alter specifications at any time

0740593 6/24



CASCADE TEK

Cascade TEK Solutions, LLC
 300 N 26th Ave
 Cornelius, OR 97113
 www.cascadetek.com

PROPRIETARY AND CONFIDENTIAL	NAME	DATE	MODEL:
THE INFORMATION CONTAINED IN THIS DRAWING IS THE SOLE PROPERTY OF CASCADE TEK SOLUTIONS, LLC. IT IS TO BE USED ONLY FOR THE PART OR AS A WHOLE WITHOUT THE WRITTEN PERMISSION OF Cascade TEK SOLUTIONS, LLC.	DRAWN	4/9/2017	TVO-5-2-SV
	RI		SIZE
			DWG. NO.
			B 9100952
			REV
			SCALE: 1:11
			WEIGHT:
			SHEET 1 OF 1