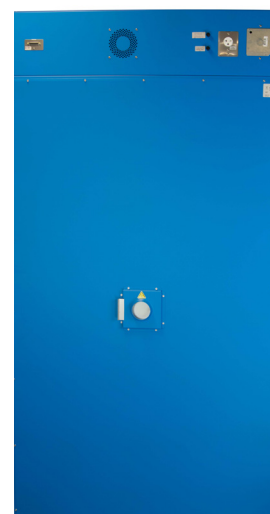


Forced Air Oven

TFO-28
PART ID: CTF2822-H



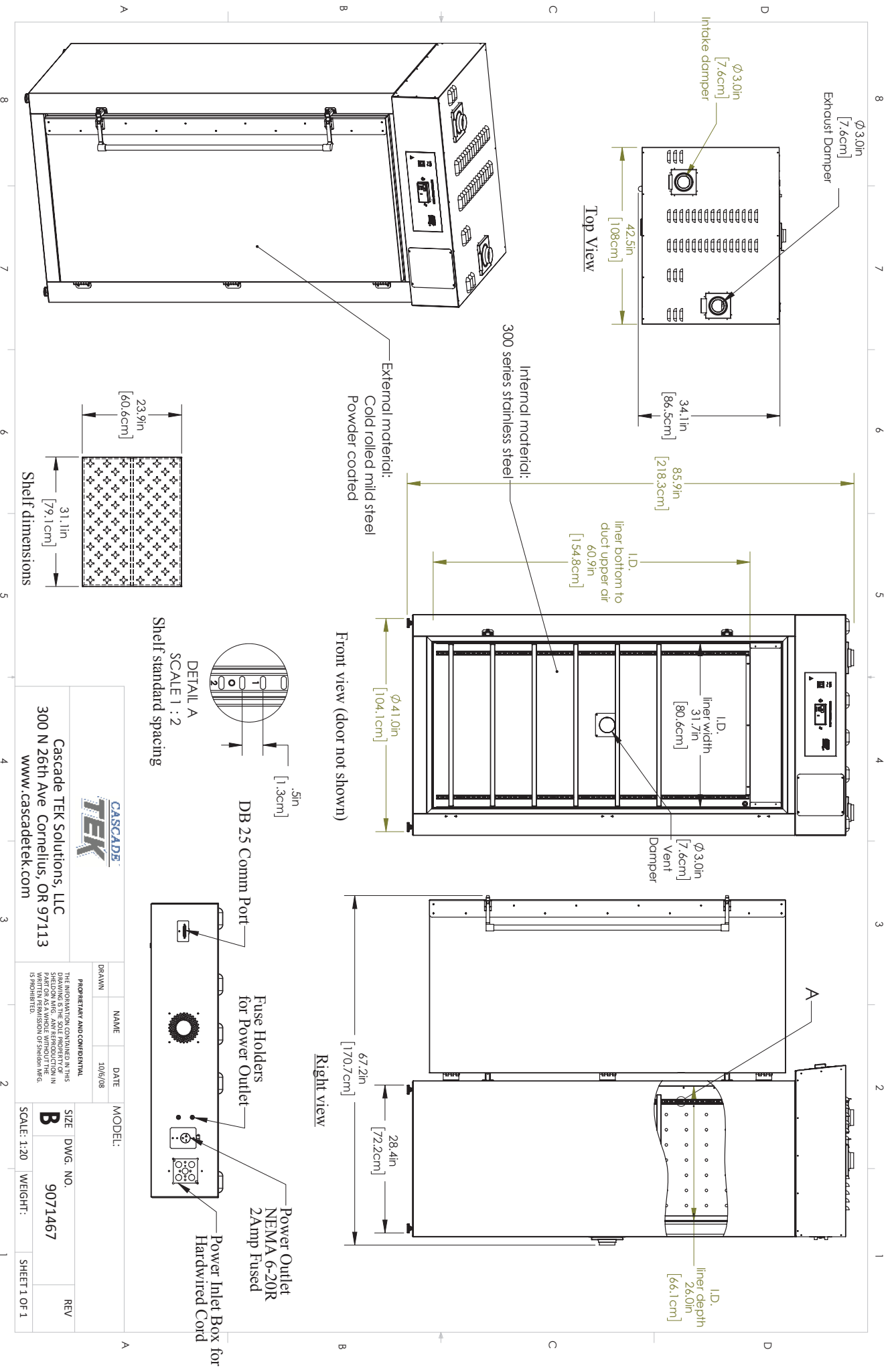
Capacity	28 cu.ft. (792 liters)
Interior Dimensions W x D x H	31.7" x 26.0" x 60.9" 805 x 660 x 1546 mm
Exterior Dimensions W x D x H	42.5" x 34.1" x 85.9" 1080 x 866 x 2182 mm
Unit Weight	569.4 lb (258.3 kg)
Shipping Weight	694 lb (315 kg)
Shelves	6 standard, 12 Max
Maximum Weight Per Shelf	75 lb / 34 kg
Permitted Total Load	450 lb / 204 kg
Standard Door Gasket	Woven Fiberglass
Access Port	3" Rear
Controls	Watlow EZ-ZONE
Warranty	2 Year Limited Warranty
Interior Construction	300 series stainless steel
Exterior Construction	20 gauge steel, powder coated
Vertical Clearance	24.0" (600 mm)
Wall Clearance, Each Side	6.0" (152 mm)
Wall Clearance, Rear	12.0" (300 mm)
Electrical, 50/60Hz, AC, 1Ø	
Voltage	220V-240V
Full Load Amps	50
Nominal Power (watts @150°C)	7142
Direct Hardwire	✓
Energy Consumption (kWh/day)	
At 80°C	96.9
At 150°C	166
At 306°C	263
Temperature Range 15°C above ambient to 306°C	
Heat-Up Time — Minutes to 80°C	6.0
Heat-Up Time — Minutes to 150°C	15.0
Heat-Up Time — Minutes to 306°C	31.0
Recovery after Door Opening (30 sec.) — Minutes to 80°C	3.0
Recovery after Door Opening (30 sec.) — Minutes to 150°C	3.0
Recovery after Door Opening (30 sec.) — Minutes to 306°C	5.0
Recovery after Door Opening (60 sec.) — Minutes to 80°C	5.0
Recovery after Door Opening (60 sec.) — Minutes to 150°C	5.5
Recovery after Door Opening (60 sec.) — Minutes to 306°C	10.0
Temperature Uniformity	
At 80°C	1.5
At 150°C	2.5
At 306°C	5.5
Air Flow Performance	
Air Changes Per Hr at Max	95
Flow Rate (CFM)	44



MADE IN
USA



0740580 11/20



Cascade TEK Solutions, LLC
 300 N 26th Ave
 Cornelius, OR 97113
 www.cascadetek.com

PROPRIETARY AND CONFIDENTIAL	NAME	DATE	MODEL:
THE INFORMATION CONTAINED IN THIS DRAWING IS THE SOLE PROPERTY OF CASCADE TEK. ANY REPRODUCTION OR TRANSMISSION OF THIS INFORMATION WITHOUT WRITTEN PERMISSION OF Cascade TEK IS PROHIBITED.		10/6/08	

SIZE	DWG. NO.	REV
B	9071467	

SCALE: 1:20 WEIGHT: SHEET 1 OF 1