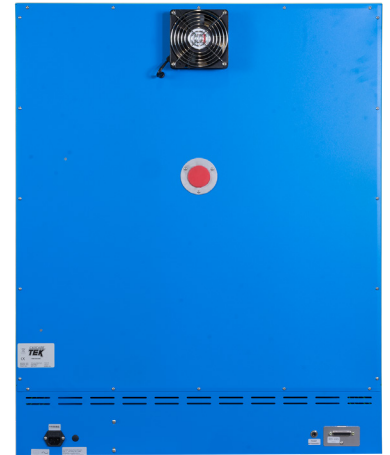


Forced Air Oven

TFO-5

PART ID: CTF522



Capacity	4.9 cu.ft. (138.0 liters)
Interior Dimensions W x D x H	21.0" x 19.4" x 20.7" 533 x 494 x 527 mm
Exterior Dimensions W x D x H	31.4" x 28.1" x 38.8" 798 x 714 x 986 mm
Unit Weight	208 lb (94.3 kg)
Shipping Weight	258 lb (117 kg)
Shelves	2 standard, 9 total
Maximum Weight Per Shelf	50 lb / 22.6 kg
Permitted Total Load	200 lb / 91 kg
Standard Door Gasket	Woven Fiberglass
Access Port	1.75" Rear
Controls	Watlow PM9 Plus
Warranty	2 Year Limited Warranty
Interior Construction	300 series stainless steel
Exterior Construction	20 gauge steel, powder coated
Vertical Clearance	24.0" (600 mm)
Wall Clearance, Each Side	6.0" (152 mm)
Wall Clearance, Rear	12.0" (300 mm)

Electrical, 50/60Hz, AC, 1Ø

Voltage	110V-120V
Full Load Amps	14
Nominal Power (watts @150°C)	700
Recommended Breaker, Amps	15
NEMA Plug Supplied	5-15P

Energy Consumption (kWh/day)

At 80°C	7.5
At 150°C	13.5
At 306°C	23.8

Temperature Range 20°C above ambient to 306°C

Heat-Up Time — Minutes to 80°C	9
Heat-Up Time — Minutes to 150°C	28
Heat-Up Time — Minutes to 306°C	130
Recovery after Door Opening (30 sec.) — Minutes to 80°C	2
Recovery after Door Opening (30 sec.) — Minutes to 150°C	4
Recovery after Door Opening (30 sec.) — Minutes to 306°C	45
Recovery after Door Opening (60 sec.) — Minutes to 80°C	3.5
Recovery after Door Opening (60 sec.) — Minutes to 150°C	6
Recovery after Door Opening (60 sec.) — Minutes to 306°C	57

Temperature Uniformity

At 80°C	0.75°C
At 150°C	1.8°C
At 306°C	4.5°C

Air Flow Performance

Air Changes Per Hr at Max	180
Flow Rate (CFM)	15.2

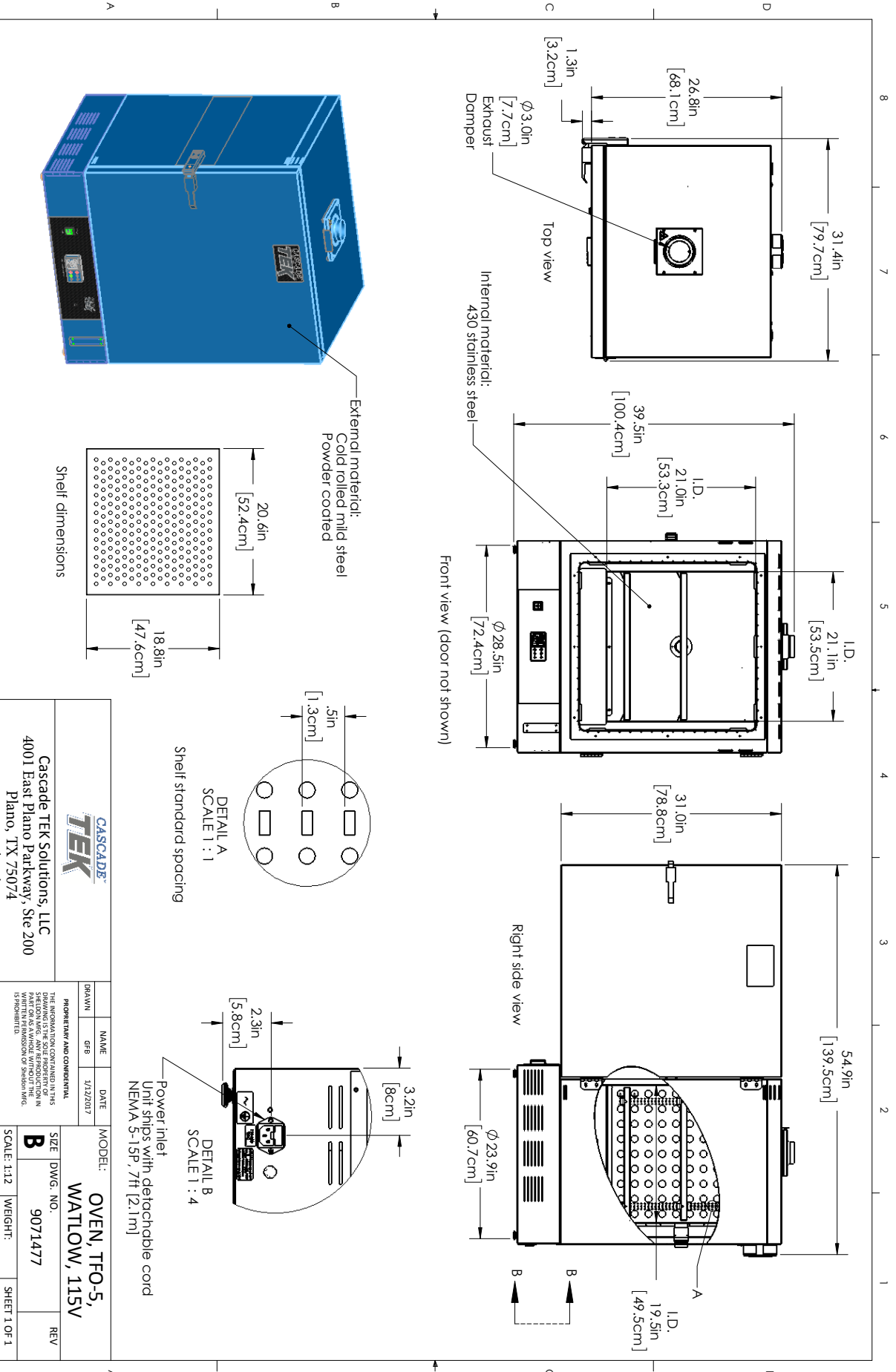
MADE IN
USA



0740577 6/22

Contact Cascade TEK

sales@cascadetek.com • cascadetek.com • +1-971-371-4096



		MODEL: OVEN, TFO-5, WATLOW, 115V	
		SIZE DWG. NO. B 9071477	REV
Cascade TEK Solutions, LLC 4001 East Plano Parkway, Ste 200 Plano, TX 75074 www.cascadetek.com		THE INFORMATION CONTAINED IN THIS DRAWING IS THE SOLE PROPERTY OF CASCADE TEK. IT IS TO BE USED ONLY IN CONNECTION WITH THE PART OR AS A WHOLE WITHOUT THE WRITTEN PERMISSION OF Cascade TEK. © 2015	
DRAWN GEB	NAME GEB	DATE 1/12/2017	SCALE: 1:12 WEIGHT: