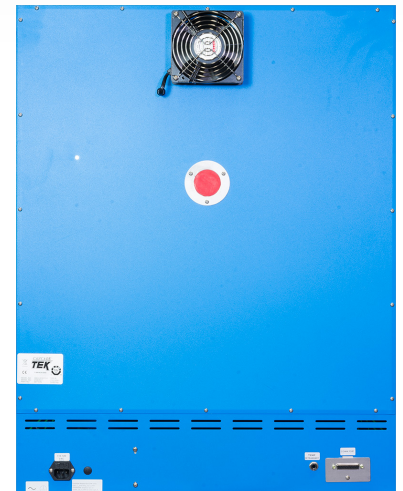


# Forced Air Oven

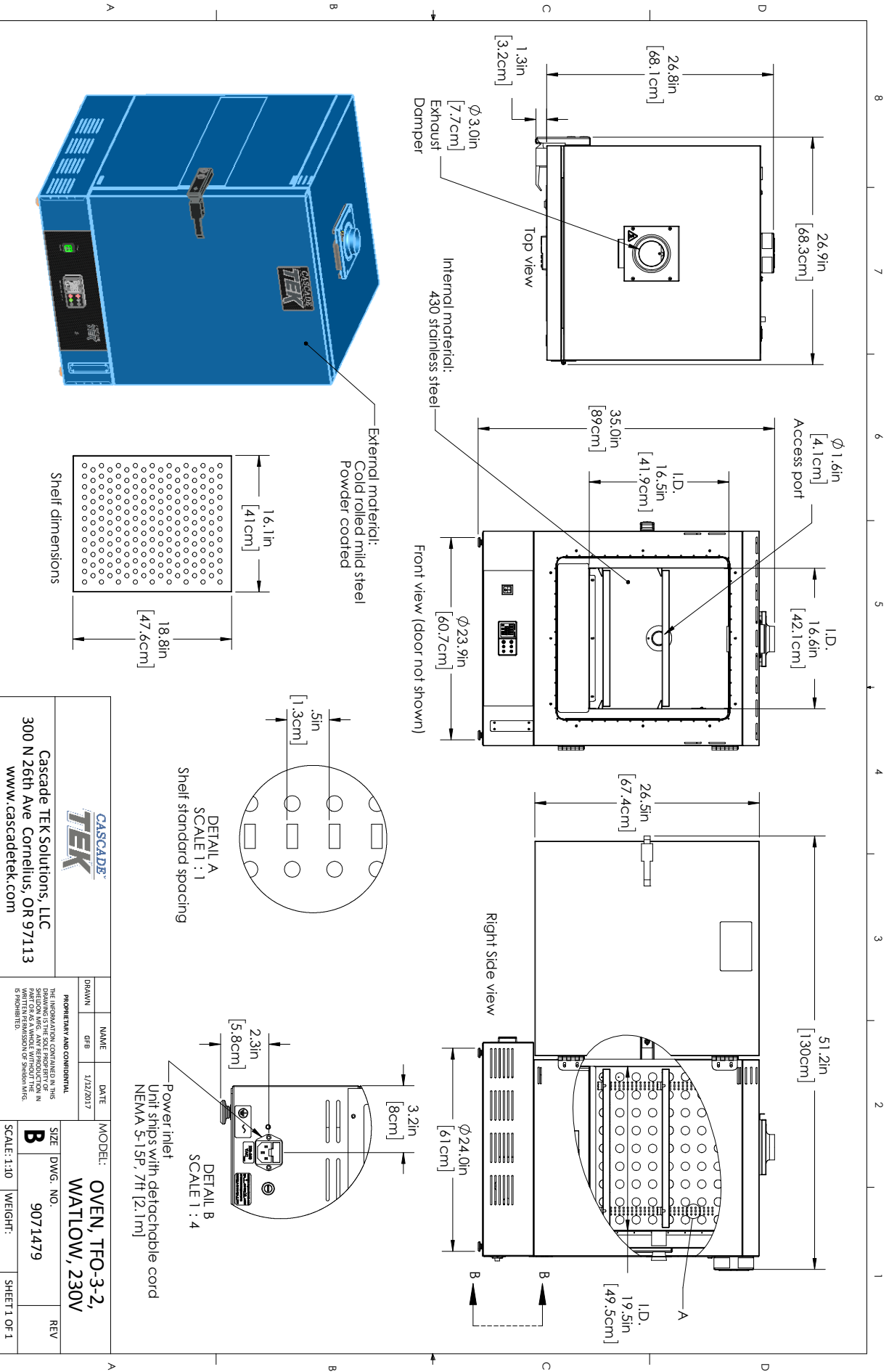
## TFO-3-2 PART ID: CTF323-EA



Capacity	3 cu.ft. (85.0 liters)
Interior Dimensions W x D x H	16.5" x 19.5" x 16.2" 419 x 495 x 412 mm
Exterior Dimensions W x D x H	26.9" x 28.6" x 34.0" 684 x 727 x 840 mm
Unit Weight	170.5 lb (77.3 kg)
Shipping Weight	215.6 lb (97.8 kg)
Shelves	2 standard, 7 total
Maximum Weight Per Shelf	50 lb / 22.6 kg
Permitted Total Load	200 lb / 91 kg
Standard Door Gasket	Woven Fiberglass
Access Port	1.75" Rear
Controls	Watlow PM9 Plus
Warranty	2 Year Limited Warranty
Interior Construction	300 series stainless steel
Exterior Construction	20 gauge steel, powder coated
Vertical Clearance	24.0" (600 mm)
Wall Clearance, Each Side	6.0" (152 mm)
Wall Clearance, Rear	12.0" (300 mm)
<b>Electrical, 50/60Hz, AC, 1Ø</b>	
Voltage	220V-240V
Full Load Amps	10
Nominal Power (watts @150°C)	675
Recommended Breaker, Amps	15
NEMA Plug Supplied	6-15P
<b>Energy Consumption (kWh/day)</b>	
At 80°C	6.5
At 150°C	12.2
At 306°C	22.1
<b>Temperature Range 20°C above ambient to 306°C</b>	
Heat-Up Time — Minutes to 80°C	6
Heat-Up Time — Minutes to 150°C	15
Heat-Up Time — Minutes to 306°C	57
Recovery after Door Opening (30 sec.) — Minutes to 80°C	1
Recovery after Door Opening (30 sec.) — Minutes to 150°C	1.5
Recovery after Door Opening (30 sec.) — Minutes to 306°C	5.5
Recovery after Door Opening (60 sec.) — Minutes to 80°C	2
Recovery after Door Opening (60 sec.) — Minutes to 150°C	3.5
Recovery after Door Opening (60 sec.) — Minutes to 306°C	11
<b>Temperature Uniformity</b>	
At 80°C	0.75°C
At 150°C	2.5°C
At 306°C	5°C
<b>Air Flow Performance</b>	
Air Changes Per Hr at Max	225
Flow Rate (CFM)	11.3



0740576 05/24



<b>CASCADE TEK</b>		<b>MODEL: OVEN, TFO-3-2, WATLOW, 230V</b>	
Cascade TEK Solutions, LLC 300 N 26th Ave Cornelius, OR 97113 www.cascadetek.com		SIZE DWG. NO. 9071479	
PROPERTY AND CONFIDENTIAL		REV	
THE INFORMATION CONTAINED IN THIS DRAWING IS THE SOLE PROPERTY OF CASCADE TEK SOLUTIONS, LLC. IT IS TO BE USED FOR THE PARTS OR AS A WHOLE WITHOUT THE WRITTEN PERMISSION OF CASCADE TEK SOLUTIONS, LLC.		SCALE: 1:10	
DRAWN: gfb		WEIGHT: SHEET 1 OF 1	
DATE: 1/12/2017			
NAME: gfb			